
SCHOOL ORGANISATION COMMITTEE

11 JULY 2006 AT 18:00HRS

CIVIC CENTRE, HIGH ROAD, WOOD GREEN, LONDON N22 8L8

MEMBERS: Councillors SANTRY, ENGERT, B. HARRIS, MEEHAN, NEWTON AND
1 VACANCY

SCHOOL GOVERNORS: Ms C Andrews, Ms B Simon, Mr J Connerty, Mr T Fyles (Vice-Chair) and
Dr N Oparaeché

LONDON DIOCESAN BOARD FOR SCHOOLS: Mr G Marriner and Mr L Haward

WESTMINSTER DIOCESE EDUCATION SERVICE: Mrs M Fayker and Mike Pittendreigh.

LEARNING & SKILLS COUNCIL Ms Phillippa Langton

AGENDA

- 1. ELECTION OF CHAIR AND VICE-CHAIR OF THE SCHOOL ORGANISATION COMMITTEE FOR THE MUNICIPAL YEAR 2006/2007**
- 2. APOLOGIES FOR ABSENCE (IF ANY)**
- 3. URGENT BUSINESS**

The Chair will consider the admission of any late items of urgent business. (Late items will be considered under the agenda item where they appear. New items will be dealt with at item 9 below).

4. DECLARATIONS OF INTEREST

A member with a personal interest in a matter who attends a meeting of the authority at which the matter is considered must disclose to that meeting the existence and nature of that interest at the commencement of that consideration, or when the interest becomes apparent.

A member with a personal interest in a matter also has a prejudicial interest in that matter if the interest is one which a member of the public with knowledge of the relevant facts would reasonably regard as so significant that it is likely to prejudice the member's judgement of the public interest.

5. MINUTES: TO CONFIRM AND SIGN THE MINUTES OF THE MEETING OF THE SCHOOL ORGANISATION COMMITTEE HELD ON 18 JANUARY 2006. (ATTACHED) (PAGES 1 - 4)

6. DEPUTATIONS/PETITIONS/PRESENTATIONS/QUESTIONS

To consider any requests received in accordance with Standing Orders

7. 2006 SCHOOL PLACE PLANNING REPORT (PAGES 5 - 78)

To report on demand for pupil places in Haringey Primary, Secondary and Special schools, and to update on action to respond to this demand (Report of the Deputy Director, The Children's Service)(attached)

8. UPDATE ON NEW SECONDARY SCHOOL AND STATUTORY REGULATIONS FOR NEW SECONDARY SCHOOL COMPETITION (PAGES 79 - 90)

To update on the new secondary school, and to provide an overview of the new 2006 regulations governing additional school competitions (Report of the Deputy Director, The Children's Service) (attached).

9. NEW ITEMS OF URGENT BUSINESS

To consider any items admitted at item 2 above

10. DATE OF NEXT MEETING

12 October 2006 at 6:00pm

YUNIEA SEMAMBO
Head of Member Services
River Park House
225 High Road
Wood Green
London N22 8HQ

ANNE THOMAS
Principal Support Officer (Council)
Tel: 020 8489 2941
Fax: 020 8881 2660
anne.thomas@haringey.gov.uk

3 July 2006

This page is intentionally left blank

MINUTES OF THE SCHOOL ORGANISATION COMMITTEE
18 January 2006

COUNCILLORS: *Bax (Chair), *Engert, *Harris, *Meehan, *Newton and *Santry

SCHOOL GOVERNORS: Ms C Andrews, *Mr J Connerty, *Mr T Fyles (Vice Chair), Dr N Oparaeché & *Ms B Simon.

LONDON DIOCESAN BOARD FOR SCHOOLS: Mr L Haward & *Mr G. Marriner

WESTMINSTER DIOCESE EDUCATION SERVICE: *Mrs M Fayker & *Mr M Pittendreigh.

LEARNING AND SKILLS COUNCIL: Ms P Langton.

*** Members present**

In attendance: Lindsay Bates, Director of Strategy and Skills, LSC representing Ms P Langton.
Cllr Ron Aitken
Ian Bailey, Assistant Director, Quality & Development, Children's Services, LBH.
Corinne Hilton, Quality & Development, Children's Service, LBH.

SOC25. CHAIR'S ANNOUNCEMENT

The Chair announced the recent death of a Member of Committee, Mrs Sheila Berkery-Smith, OBE and representative of the WDES. She was a well known Member who had given her life to public service in Haringey and particularly education over a number of years. The SOC stood for one minute silence in memory.

SOC26. APOLOGIES FOR ABSENCE (Agenda item 1)

Apologies for absence were received on behalf of Dr N Oparaeché, and apologies for lateness were received from Cllr Harris.

SOC27. URGENT BUSINESS (Agenda item 2)

There were no items of urgent business.

SOC28. DECLARATIONS OF INTEREST (Agenda item 3)

None received.

SOC29. MINUTES (Agenda item 4)

RESOLVED: That the Minutes of the meeting held on 24 October 2005 were approved.

SOC30. MATTERS ARISING

The clerk advised members of the nominated name of the marketing company (Creative Change) appointed to work on the branding for the new Sixth Form Centre.

SOC31. DEPUTATIONS/PETITIONS/PRESENTATIONS/QUESTIONS (Agenda item 5)

The meeting agreed to receive a presentation from Cllr Ron Aitken and deputations on the Proposed Expansion of Coleridge Primary School from the following:

1. Mr David Barry (Chair of Governors) Ashmount Primary School – objector.
2. Ms Arabella Weir (PTA) Ashmount Primary School – objector.
3. Ms Jill Russell (Chair of Governors) & Ms Shirley Boffey (Headteacher) Coleridge School – supporter.
4. Ms Sarah Cook, Future of Coleridge Group, Coleridge School – objector.
5. Ms Sue Hessel, Haslemere Road Residents Association – objector.
6. Mr Nariman Ghandi (Chair of Governors) Highgate Primary School – objector.
7. Dr Kirit Modi, Assistant Director, Islington Council – Objector.
8. Ms Helen Riley, Pro Group, Coleridge School - supporter.
9. Mr A M Dickson (Chair of Governors) St Peter in Chains RC Infant School – objector.

Questions were asked of each deputation.

The Chair thanked each deputation for their attendance.

SOC31. THE ENLARGEMENT OF COLERIDGE PRIMARY SCHOOL (Agenda item 6)

Ian Bailey, Assistant Director of Children's Services, presented the report on the proposal to enlarge Coleridge Primary School. We noted the consultation was carried out in accordance with the Schools Standards and Framework Act 1998 and the guidance "Proposers Guidance for Local Authorities and Governing Bodies: Statutory Proposals for Changes to Mainstream Schools" published by the DfES. A joint Coleridge School/ Children's Service working party was formed to develop the proposals.

There is a historical shortage of primary places in the area and the proposals have the full support of the school and the governing body. The proposal is to expand Coleridge Primary School from its present two forms of entry to four forms. The additional capacity would be located on the site of the former TUC centre, immediately opposite the existing Coleridge site. The current proposal is for the school to operate with foundation and key stage 1 on the TUC site and with key stage 2 on the existing Coleridge site.

The 2006 entry additional reception cohort would be accommodated on the existing Coleridge school site and building works to the TUC site would be completed in time for the September 2007 intake.

Members noted the points in support of the proposal:

- Allowing school children places close to their homes.

- A larger Coleridge would allow children from a wider and diverse area to be educated at a very successful school.
- Praise for the leadership of Coleridge school.
- Support for increased parental choice.

The main objections and concerns raised:

- Evidence of demand for places.
- Impact on other local schools.
- The size of the proposed expanded school.
- Impact of increased traffic in area.
- Safe crossing of the road between the two sites.
- Issues concerning the consultation process.

The representations received concerning traffic would be addressed once planning permission was sought.

RESOLVED:

1. That following each member group having cast their vote the SOC did not agree a unanimous decision.
2. That the proposal be considered by the Office of the Schools Adjudicator. This process is expected to take at least six weeks.

SOC32. NEW ITEMS OF URGENT BUSINESS (Agenda item 10)

None received.

SOC36. DATE OF THE NEXT MEETING (Agenda item 11)

Provisional: Monday 27 February 2006 at 6:00pm.

THE MEETING WAS DECLARED CLOSED AT 10:40PM

JUDY BAX
Chair

This page is intentionally left blank

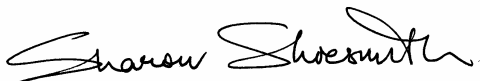
Agenda item:

School Organisation Committee**On 11th July 2006**Report Title: **School Place Planning Annual Report**Forward Plan reference number (if applicable): **[add reference]**Report of: **Sharon Shoesmith
Director
The Children's Service**Wards(s) affected: **All****1. Purpose**

1.1 To report on demand for pupil places in Haringey Primary, Secondary and Special schools and to update on action to respond to this demand.

2. Recommendations

2.1 For SOC to review the 2006 school place planning report.

Report Authorised by: **Sharon Shoesmith
Director
The Children's Service**

Contact Officer: **Ian Bailey – Deputy Director, The Children's Service
Tel - 0208 489 2450****Corinne Hilton - School Organisation & Development Officer
Tel - 0208 489 5019**

3. Executive Summary

3.1 This report:

- updates on the progress in moves to ensure sufficient school places to meet local demand;
- summarises the most recent school rolls projections.

3.2 The overall conclusions are as follows:

3.2.1 At primary level, the provision of 120 new places in the west of the borough at Coldfall (an additional 30) Tetherdown (an additional 30) and Coleridge (an additional 60) should provide sufficient capacity for the foreseeable future, although this will be reviewed annually.

3.2.2 We have assisted a number of primary schools to reduced Planned Admission Numbers (PANs). Again this will be reviewed annually to reduce part filled classes, which reduces the associated budgetary risks to schools.

3.2.3 At secondary level, the Building Schools for the Future bid was successful in acquiring £165 million to renovate Haringey's Secondary School Buildings. The consultation to build the new secondary school began on the 26th June 2006 and is scheduled to finish in March 2007.

3.2.4 At the Special Schools demand exceeds capacity at Moselle, William C Harvey and The Vale. Blanche Neville is currently experiencing declining demand and rolls.

3.2.5 A new reporting arrangement for statutory consultations is being proposed where by the Executive member for Children and Young People be formally consulted after the initial consultation with interested parties, but before the publication of statutory notices, in some cases the Executive member may choose to take a report on the consultation outcome to the Executive.

4 Reasons for any change in policy or for new policy development (if applicable)

4.1 The Education Bill 2006 (subject to a positive CPA outcome) will enable the council to take on the necessary decision making powers currently with the School Organisation Committee (SOC).

4.2 The role of SOC will probably cease from 2007, subject to the passing of the Education and Inspection Bill 2006.

5 Local Government (Access to Information) Act 1985

5.1 GLA roll projections for Haringey 2006

5.2 1997-2006 Haringey PLASC returns

6 Background

6.1 This is the second annual report on school places in Haringey. This report updates all projections on primary and secondary rolls and for the first time adds roll trends in the borough's special schools.

6.2 Each report looks 10 years ahead, with detailed proposals for changes a minimum of two years ahead. Thus, if a school organisational change were recommended in July 2007, we would expect the change to come into operation in time for September 2009. This will allow sufficient time for statutory consultation to take place before admission numbers are established and well before the start of the admissions applications process.

6.3 The main developments in the previous school year are as follows:

- Works are taking place to allow Tetherdown to expand to 2 forms of entry (fe) from this coming September.
- The final stage of Coleridge expansion consultation was completed with the Schools Adjudicator decision in favour of expansion in March 2006. Due to the delay, admission for 2006 was not possible. Plans are now nearing completion to allow additional pupils from September 2007, subject to planning approval, (the Executive agreed to propose this expansion in considering the 2005 school places report).
- As proposed in the 2005 report, we have commenced reviews of schools where admission limits are consistently higher than demand for places. As a result, planned admission numbers have been reduced (through the normal consultation and Executive decision-making process on admissions arrangements) at:

| | |
|-----------------|----------------------|
| Bounds Green | (90 to 60 from 2007) |
| Seven Sisters | (81 to 60 from 2007) |
| Alexandra | (60 to 30 from 2007) |
| Devonshire Hill | (75 to 60 from 2007) |

Further reviews are proposed in this report.

- Confirmation of the Building Schools for the Future (BSF) funding envelope, which now stands at £165m. Consultation has now started on the new secondary school, for 2010 opening. This was the subject of a report to Executive on 13 June 2006.

6.4 Also, concerning school organisation, we are pleased to report that four sets of infant and junior schools have consulted or are consulting on 'hard' federation, allowing them to operate in an integrated way under a single head teacher and governing body, sharing resources and allowing consistent leadership from foundation to the end of Key Stage 2. The current position on these federations is as follows:

Campbourne infant and junior school's have consulted and agreed to federate from 1st September 06.

Bounds Green infant and junior school's have consulted and agreed to federate from 1st September 06.

St Mary's RC infant and junior school's have consulted and agreed to federate from 1st September 06.

St Paul's and All Hallows CE infant and junior school's have consulted and agreed to federate from 1st September 06.

6.5 Demand for school places at Moselle, William C Harvey and The Vale continues to increase year on year. All of these schools are full and have waiting lists. In recent years Blanche Neville has experienced declining rolls. This is probably a result of neighbouring boroughs expanding their provision for hearing impaired pupils, along with increasing numbers of hearing impaired pupils in mainstream education.

6.6 Future reports to Executive will consider the proposed Inclusive Learning Campus project, involving William C Harvey, Moselle, Broadwater Farm primary and White Hart Lane secondary schools.

6.7 This report is accompanied by further information detailed appendices. These set out in detail:

- Overall pupil roll projections.
- Area by area data on:
 - primary school rolls;
 - roll projections;
 - admissions applications;
 - school mobility;
 - distances pupils live from school and;
 - local housing developments.
- School organisation proposals in neighbouring boroughs.

6.8 This information has been shared with all primary schools and discussed at the Primary Head Teachers forums. As last year, it will provide a valuable resource for discussion on any school organisation matters and will be published on Haringey's website following the executive meeting.

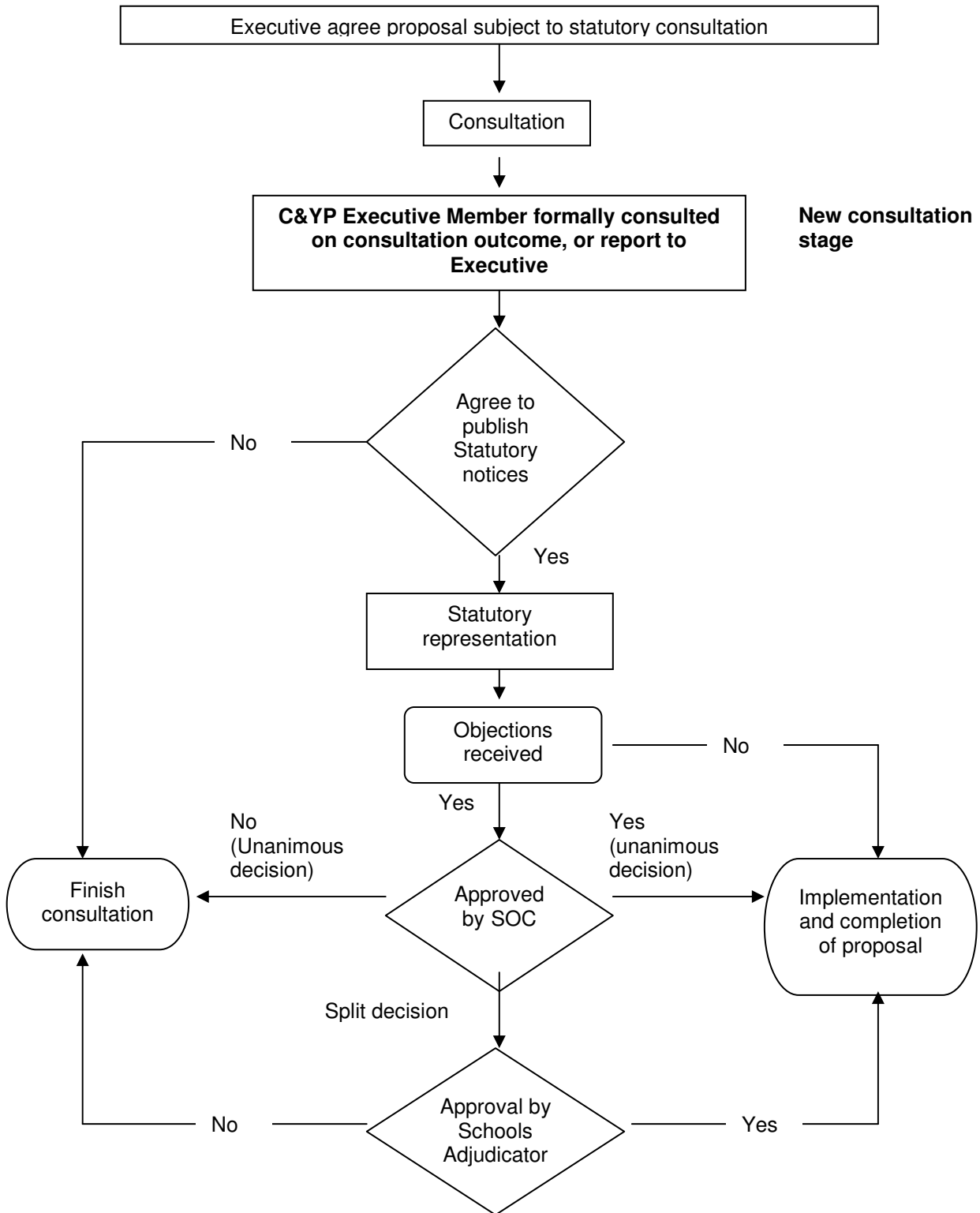
7 Principles for School Place Planning in Haringey

7.1 To guide the planning process, as well as the legislative and national policy context, the following principles were agreed in July 2005. We should:

- seek to meet demand for places within local communities, having regard for the role of schools at the heart of sustainable communities;
- seek to make all our schools popular and successful. Where expansion is needed to meet demand for places, we should favour the expansion of schools where there is proven demand and well-established and successful leadership and management;
- have regard to the impact of any changes on the viability and standards at existing and new schools;
- bring forward proposals that make best use of scarce capital resources.

8 Reporting Arrangements for School Organisational Statutory Consultation in Haringey

- 8.1 The Education Bill 2006 (subject to a positive CPA outcome) will enable the council to take on the necessary decision making powers currently with the School Organisation Committee (SOC). In anticipation of this and to reflect the longer planning horizon represented in these annual reports, we propose introducing an additional decision-making referral to member's in future statutory school organisation processes.
- 8.2 Currently Executive agrees to School Organisational changes subject to the outcome of the statutory consultation. Therefore, Executive agrees to a change before any public consultation, but members are not formally asked to reflect on the outcomes of the consultation before publicising statutory notices.
- 8.3 We are proposing that the Executive member for Children and Young People be formally consulted after the initial consultation with interested parties, but before the publication of statutory notices, in some cases the Executive member may choose to take a report on the consultation outcome to the Executive.
- 8.4 This is illustrated in the diagram on the following page showing the statutory process. Note that the role of SOC will probably cease from 2007, subject to the passing of the Education and Inspection Bill 2006.

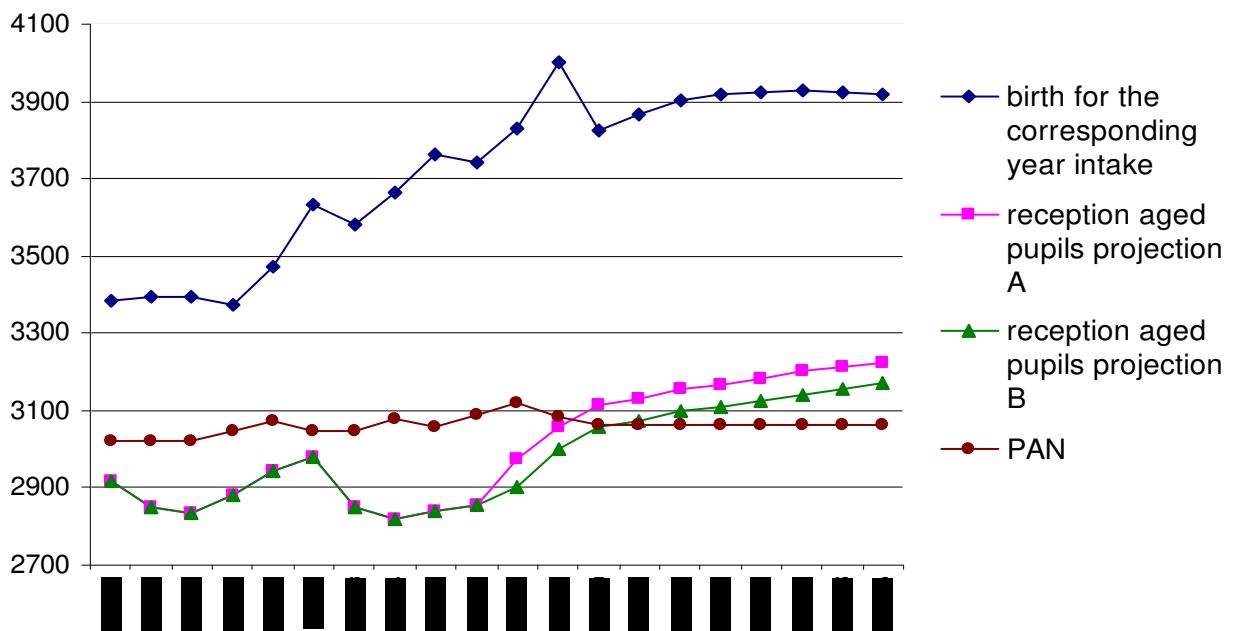


9 School Roll Projections

- 9.1 We have been working very closely with the Greater London Authority (GLA) demographers to review the assumptions in the projections. As a result, we now have greater confidence in the projections presented in this report, through we will continue to build our own time series data.
- 9.2 The overall picture is fairly clear: the long-term trend in school rolls is upwards and - given the pressures of a young population and major new housing developments – it will continue in that direction.

10 Provision of Primary School Places

- 10.1 The graph below shows the main trends affecting the overall planning of primary school places in Haringey.



- 10.2 The upper line shows the number of live births for the relevant years of entry to school (thus children born 2001/02 entered reception in school year 2005/06). Although the numbers of births fluctuated in the late 90's the long-term trend is upwards. For the September 2007 reception intake there was a noticeable increase in the number of births. This trend is then projected to decline for 2008, but to return to a steady upward trend beyond then.
- 10.3 The line for the number of reception aged pupils shows the actual (to 2005/06) and 2 projections for (2006/07 onwards) pupil roll count (see 11.7 to 11.10 for an explanation of the two projections). The differences between this and the births line shows the impact of migration: a substantial number of children and their families move away from the borough between birth and school age. This is the case even though Haringey is a net 'importer' of pupils in the primary phase.

- 10.4 Primary school rolls tend to fluctuate, with a slight decline in recent years. However, the overall trend, driven by the birth rate and by the rate of housing developments planned for Haringey, is upwards, as shown by the reception aged pupil line.
- 10.5 The line between births and rolls show the provision of places, based on the Planned Admission Number (the number of reception places available for September entry). This line shows the impact of the Tetherdown, Coldfall and Coleridge expansions. This line also shows the impact of planned school PAN reductions at Bounds Green, Seven Sisters, Alexandra and Devonshire Hill.
- 10.6 We expect the number of reception age pupils to increase; however our expectations are more cautious than the projection from the GLA. We do not expect the number of reception age pupils to exceed the number of reception places by September 2007 as shown in projection A.
- 10.7 The table on page 8 shows the two sets of projections produced by the GLA. To take into consideration fluctuations found in school roll data following the increase or reduction of PANs, various methodological measures can be applied to the raw data on births and housing. For example, with Coldfall expanding in the last year, the rolls will have risen for that year and are expected to stay at the new higher level in the coming years.
- 10.8 The standard methods take the average of the most recent 4 years of PLASC data. This produces lower overall school roll projections, as is demonstrated in projection set B. Here the four years' data is treated with equal weighting and therefore any planned PAN changes are not reflected in the data.
- 10.9 Projection set A tries to accommodate the recent increase at Coldfall. To do this only the most recent year's data (2006 PLASC data) is applied to the model. This results in a picture of faster rising rolls.
- 10.10 Although we believe projection set A is over-estimating the extend of overall future demand, at a more local level it reflects a more realistic trend representation of reception place demand (either increasing, stable or declining). For this reason Projection set A has been used in appendix 2.

| Intake Year | Actual & projected Births applicable for that cohort intake | Actual (1996-2005) & Projection (2006-2014) reception aged pupils | | PAN Figure | % of Surplus amount of places | |
|-------------|---|---|------------------|------------|-------------------------------|------------------|
| | | Projection set A | Projection set B | | Projection set A | Projection set B |
| 1996/97 | 3386 | 2919 | 2919 | 3020 | 3.34 | 3.34 |
| 1997/98 | 3397 | 2849 | 2849 | 3020 | 5.66 | 5.66 |
| 1998/99 | 3396 | 2835 | 2835 | 3020 | 6.13 | 6.13 |
| 1999/00 | 3372 | 2880 | 2880 | 3050 | 5.57 | 5.57 |
| 2000/01 | 3474 | 2943 | 2943 | 3071 | 4.17 | 4.17 |
| 2001/2 | 3635 | 2978 | 2978 | 3050 | 2.36 | 2.36 |
| 2002/3 | 3581 | 2849 | 2,849 | 3050 | 6.59 | 6.59 |
| 2003/4 | 3664 | 2820 | 2820 | 3080 | 8.44 | 8.44 |
| 2004/5 | 3765 | 2840 | 2840 | 3059 | 7.16 | 7.16 |
| 2005/6 | 3743 | 2855 | 2855 | 3089 | 7.58 | 7.58 |
| 2006/7 | 3832 | 2974 | 2903 | 3119 | 4.65 | 6.93 |
| 2007/8 | 3999 | 3057 | 2999 | 3083 | 0.84 | 2.72 |
| 2008/9 | 3823 | 3115 | 3056 | 3083 | -1.04 | 0.88 |
| 2009/10 | 3866 | 3130 | 3073 | 3083 | -1.52 | 0.32 |
| 2010/11 | 3904 | 3154 | 3099 | 3083 | -2.30 | -0.52 |
| 2011/12 | 3918 | 3168 | 3111 | 3083 | -2.76 | -0.91 |
| 2012/13 | 3926 | 3180 | 3124 | 3083 | -3.15 | -1.33 |
| 2013/14 | 3929 | 3201 | 3141 | 3083 | -3.83 | -1.88 |
| 2014/15 | 3925 | 3211 | 3156 | 3083 | -4.15 | -2.37 |
| 2015/16 | 3920 | 3222 | 3170 | 3083 | -4.51 | -2.82 |

- 10.11 In recent years we have been matching places to where there is demand, by increasing capacity in the west of the borough and reducing the PANs of schools that have high surplus capacity in the east of the borough. This will have an impact on demand. It is now necessary to see the actual impact of these changes before seeking additional school capacity. We will be watching the situation very closely.
- 10.12 For the July 2007 report we will be in a better position to predict 2008 PLASC rolls, as Tetherdown will have admitted their first reception class of 60 and we will have received and processed the reception applications for September 2007, when the Coleridge expansion comes into effect.
- 10.13 Because of the additional capacity being created and because we have schools with physical capacity above PAN (see paragraph 7.3), we do not believe this to be a high-risk strategy. We will monitor the demand at admissions application and respond if necessary.

11 Local Provision

- 11.1 Sufficient overall provision does not necessarily prevent demand in popular locations and surplus capacity in other areas. The 14 planning areas used in this report have not changed since the 2005 report. Detailed information about each of these is shown in Appendix 2.

11.2 The current position, by planning area, is as follows:

| PA | Ward(s) | Total reception PAN | Total reception roll 2005/06 | Number of reception surplus places | Percentage of reception surplus places |
|--------|--|---------------------|------------------------------|------------------------------------|--|
| 1 | Alexandra, Fortis Green and Muswell Hill | 330 | 325 | 5 | 1.52% |
| 2 | Highgate | 116 | 116 | 0 | 0% |
| 3 | Crouch End and Hornsey | 330 | 327 | 3 | 0.91% |
| 4 | Stroud Green | 120 | 118 | 2 | 1.67% |
| 5 | Harringay | 141 | 133 | 8 | 5.67% |
| 6 | St Ann's | 291 | 273 | 18 | 6.19% |
| 7 | Seven Sisters | 210 | 173 | 37 | 17.62% |
| 8 | Tottenham Green | 120 | 99 | 21 | 17.50% |
| 9 | Tottenham Hale | 210 | 203 | 7 | 3.33% |
| 10 | Northumberland Park | 268 | 265 | 3 | 1.12% |
| 11 | White Hart Lane | 165 | 136 | 29 | 17.58% |
| 12 | Bruce Grove and West Green | 257 | 223 | 34 | 13.23% |
| 13 | Noel Park | 141 | 97 | 44 | 31.21% |
| 14 | Bounds Green and Woodside | 390 | 367 | 23 | 5.90% |
| Totals | | 3089 | 2855 | 234 | 7.58% |

11.3 Planning areas 1-4 show the shortage of places in the west, with the clear need for the Coldfall, Tetherdown and Coleridge expansion in the figures for PAs 1,2,3 and 4. The admissions applications, shown in detail in Appendix 2, tell the same story.

11.4 Planning areas 7,8,11,12 and 13 show high percentages of surplus capacity, with a need to work with schools in those areas to resolve this situation. Section 13 outlines what has been done already and subsequent proposals for further work.

11.5 For an individual school, carrying unfilled places can make budgetary management difficult and can on occasions lead to deficits. In recent years these have been alleviated to some extent by Transition Support Grant (TSG). TSG is no longer available, however we will continue to work with such schools to ensure that the drive to improve standards is not adversely affected. In some cases, this may result in further reports recommending school organisation changes.

12 Surplus Places

12.1 Since the 2005 report we have been working with schools that have large percentage of surplus places and reviewing the situation with them. This work is summarised in the following paragraphs.

12.2 Most of the surplus places in PA 13 are at Alexandra Primary, which has in effect operated as a 1fe school for some years. In agreement with the school the PAN was officially reduced to 30 for September 2007. If this reduction was in effect for this year the reception surplus capacity for PA13 would be 12.61%.

This is still very high. This area needs close attention, as it will be affected by the Heartlands development, including a new secondary school and housing.

- 12.3 Most of the surplus places in PA 11 are at Devonshire Hill primary, which has in effect operated as a 2fe school for a number of years. With the agreement of the school the PAN was officially reduced from 75 to 60 pupils for September 2007. If this reduction was in effect for this year the reception surplus capacity for PA11 would be 9.33%. This is just within acceptable levels.
- 12.4 Most of the surplus capacity in PA12 is at Broadwater Farm Primary. The schools rolls for Broadwater Farm Primary have fluctuated in recent years, but they have never operated as an all-through 3fe school. Currently this school has a total surplus capacity of 20.64%. We have spoken to the school and they support a reduction in PAN to 60. If this reduction was in effect for this year the reception surplus capacity for PA12 would be 5.51%. This is within acceptable levels.
- 12.5 Planning Areas 6, 7 and 8 are experiencing declining rolls. In PA 6 we have reduced Seven Sister's PAN to 60 with effect from September 2007. However if demand increases in PA 6 then Seven Sister's original PAN can be reinstated.
- 12.6 Vacant places in PA 8 are likely to be taken in coming years by residents of the large Tottenham Hale village development by Tottenham Hale station.

13 Mobility

- 13.1 A number of Haringey schools experience a high percentage of mobility within the junior years. This creates instability for the school. Information on mobility for each school, broken down by infant and junior years is shown in appendix 2.
- 13.2 Mobility is heavily influenced by the high volume of temporary accommodation in Haringey. Recently the ODPM set a target of reducing the amount of temporary accommodation by 50% by 2010. It is not yet clear that this will have the impact of reducing short-term accommodation in Haringey. We will work with housing colleagues to review the situation.

14 Primary School Provision Conclusions

- 14.1 On the basis of the above discussion, our main work priorities for 2006/07 will be:
- The school roll and surplus situation in Seven Sisters, Noel Park wards.
 - The local impact of Hale Village and Heartlands building developments
 - Developing a greater understanding of the reason for, and impact of mobility, especially in the junior years
 - Continued monitoring of overall pupil place demand.

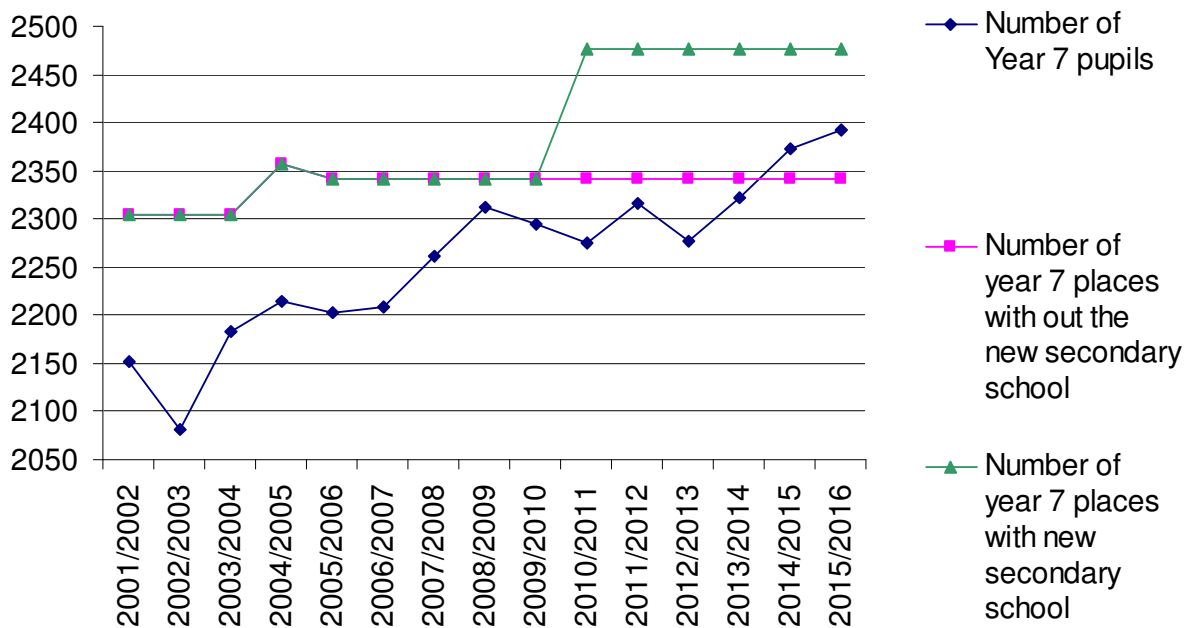
Conclusions from this work will be reported to Executive in July 2007.

15 Provision of Secondary School Places

15.1 The overall picture is fairly clear: as in the primary sector, the long-term trend in school rolls is upwards and - given the pressures of a young population and major new housing developments – it will continue in that direction. In addition to demography, improving standards are also a significant factor in raising secondary rolls – from an average of 31% 5+ A*-C in 2001 to 48.5% in 2005, making schools in the east of the borough increasingly popular. Currently, year 7 numbers are around 83% of year 6, mainly due to out-borough ‘drift’, predominantly to Enfield and Barnet. Our expectation is that this drift will reduce as standards continue to improve across all community and VA secondary schools in Haringey. With the new secondary school planned for 2010 we are expecting to reduce the drift even further.

15.2 At Executive on the 13th June 2006 it was agreed that we could begin the consultation the new secondary school in the Heartlands. This began on the 26th June 2006. We will report back to Executive in October outlining the council’s own bid for the new school.

15.3 The Greater London Authority (GLA) demographic projections show year 7 pupils increasing, as represented in the following graph.



15.4 These projections show a more realistic increase in Year 7 pupils than the 2005 report. Although the projections do fluctuate between 2008/09 to 2014/15 the general trend is upwards.

15.5 The upper line shows the impact of opening the new secondary school in 2010 and reducing the PANs of Gladsmore, PVA and White Hart lane. This line assumes the new secondary school is likely to open as an 8fe. In practice the

new school may open as a 6fe and increase to 8fe when there is sufficient demand.

15.6 The middle line shows the situation if the new school does not open. If there was no secondary school opening in 2010 then the surplus is projected to become very low at 2.8%. The impact is shown in the table below. Although from 2010 if appears there is a large amount of surplus this is distorted by the opening of the new school. Rolls can be expected to stabilise 1-2 years after the opening of the new school.

| | year | secondary PAN | year 6 | year 7 | year 7 place shortfall / surplus | % of year 7 surplus places |
|------------|-----------|---------------|--------|--------|----------------------------------|----------------------------|
| Actual | 2001/2002 | 2304 | 2652 | 2151 | 153 | 6.6 |
| Actual | 2002/2003 | 2304 | 2719 | 2082 | 222 | 9.6 |
| Actual | 2003/2004 | 2304 | 2684 | 2183 | 121 | 5.3 |
| Actual | 2004/2005 | 2358 | 2658 | 2215 | 143 | 6.1 |
| Actual | 2005/2006 | 2342 | 2672 | 2203 | 139 | 5.9 |
| Projection | 2006/2007 | 2342 | 2714 | 2208 | 134 | 5.7 |
| Projection | 2007/2008 | 2342 | 2780 | 2262 | 80 | 3.4 |
| Projection | 2008/2009 | 2342 | 2742 | 2312 | 30 | 1.3 |
| Projection | 2009/2010 | 2342 | 2710 | 2294 | 48 | 2.0 |
| Projection | 2010/2011 | 2477 | 2775 | 2275 | 202 | 8.2 |
| Projection | 2011/2012 | 2477 | 2747 | 2317 | 160 | 6.5 |
| Projection | 2012/2013 | 2477 | 2829 | 2277 | 200 | 8.1 |
| Projection | 2013/2014 | 2477 | 2895 | 2321 | 156 | 6.3 |
| Projection | 2014/2015 | 2477 | 2933 | 2372 | 105 | 4.2 |
| Projection | 2015/2016 | 2477 | 2935 | 2392 | 85 | 3.4 |

16 Provision of Special School places.

16.1 The table below shows the roll trends over the past 4 years in the borough's Special Schools

| School Name | Capacity | Jan-03 | Jan-04 | Jan-05 | Jan-06 |
|-------------------------|----------|--------|--------|--------|--------|
| Blanche Neville School | 80 | 85 | 72 | 67 | 64 |
| Moselle School | 128 | 121 | 121 | 98 | 127 |
| Vale Resource Base | 70 | 74 | 78 | 64 | 80 |
| William C Harvey School | 75 | 72 | 71 | 50 | 68 |

16.2 Apart from 2005, Moselle, William C Harvey and The Vale have stable rolls which virtually mirror that of their total pupil capacity. Blanche Neville has experienced declining rolls over the past 4 years.

17 Use of Appendices/Tables/Photographs

- | | | |
|------|------------|--|
| 17.1 | Appendix 1 | Background information on school roll projections & new Housing policies |
| | Appendix 2 | Detailed information about each Planning Area |
| | Appendix 3 | School Organisational Plans in adjoining boroughs |

Appendix 1

Background information on school roll projections

- 1 School place demand is dynamic and cannot be predicted precisely. In addition to birth rates and population movements it is affected by factors such as school standards, perceptions, popularity of individual schools, where they are located in the borough, mobility and new housing developments. For these reasons, school roll projections and plans are re-visited annually.
- 2 The last 4 years projected demand for age 4 pupils and actual show a 4.4% under-estimation for the January 2006 projected roll (September 2005 entry). A 3.4% over-estimation for the January 2005 projected roll (September 2004 entry), a difference of 101 places. A 7% over-estimation for the January 2004 projected roll (September 2003 entry), a difference of 211 places and a 3.2% over-estimation for the January 03 roll (difference of 94 places). In all of these years, all children were offered a school place.

| Year of projection | Reception pupil count | | | % difference |
|--------------------|-----------------------|-----------|--------|--------------|
| | Year | Projected | Actual | |
| 2002 | 2003 | 2943 | 2849 | 3.2% |
| 2003 | 2004 | 3031 | 2820 | 7.0% |
| 2004 | 2005 | 2942 | 2841 | 3.4% |
| 2005 | 2006 | 2728 | 2855 | -4.4% |

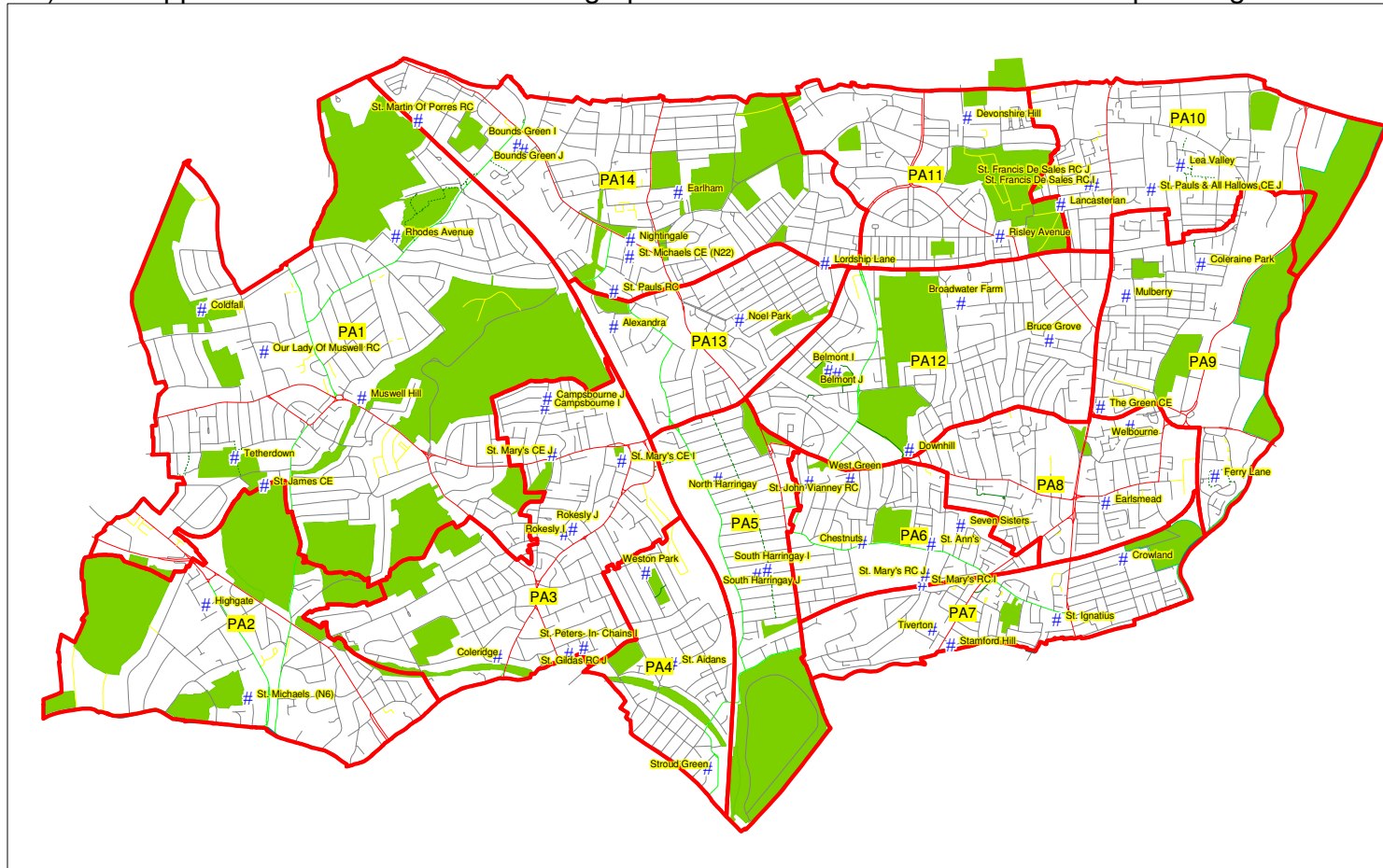
- 3 Last years GLA projection used a standard methodology. The average is taken over the past 4 years of PLASC data. This projected a lower overall school roll total than the actual total, because the current method used can not take into consideration future School PAN changes. Fluctuations found in school roll data following a change in PAN can only be introduced into the standard model once they have happened. For example, with Coldfall expanding in the last year, the rolls will have risen for that year and are expected to stay at the new higher level in the coming years.
- 4 Over the next 2 years the reception projections are likely to fluctuate until the first reception cohort at Coleridge Primary have entered the school and the resulting PLASC information (Jan 08) has been incorporated into the projection modelling.
- 5 The data used in this report is based on 2005 round scenario 8.07 special population projections produced by the GLA. (In these projections a special adjustment was made to the 1 year old figures). The population projections have been adjusted since the July 2005 report and are now projecting a slower increase in London's total population. These population projections feed the school roll projections using 2003 to 2006 PLASC actual roll counts. The GLA will be updating school roll projections again in the autumn term 2006 as they will receive revised sets of population projections from the Office of National Statistic which have improved mobility (both national & international) figures and the new London Capacity Housing Study figures.

- 6 Haringey has successfully argued that our figures from the previous Housing Capacity Study were too high. At Executive on 20th December 2005 the alterations were identified and agreed. The new London capacity is for 310,900 homes between 2007-2017 and a figure for Haringey of 6,800 dwellings or 680 dwellings per year. The new housing target represents a significant reduction in the annual requirement of 970 dwellings. In 2004, 834 dwellings were completed in the borough. The new targets come into effect for Haringey from April 2007. The GLA have incorporated the new housing targets in the school roll projections in this report.
- 7 Another aspect to the school roll projections is the patchy impact of housing developments within the borough. The projections use the housing capacity study (as opposed to actual builds) and average the child yield calculation (0-15 year olds) over the whole borough. There is no attempt to account for how many housing developments are actually built and what their impact is on the demand for local school places.
- 8 In 1992 the department of Environment commissioned work that would establish a calculation giving the expected number of children (ages 0 to 15) arising from any new housing development. The figures, derived from the Labour Force Survey, have been used extensively to estimate child yield from new housing developments in London and have been found to provide acceptable, if conservative, level of accuracy. However there is little doubt that the number of children yielded by new dwellings will always be subject to influences that are difficult to determine. Nevertheless the calculation at least provides planners with a logical based estimate to work with.
- 9 An additional factor that will affect school rolls is mobility and the effects of children living in temporary accommodation. Currently there are over 5500 households living in temporary accommodation, with over 75% including children or pregnant woman.
- 10 The ODPM recently set a target of reducing the amount of temporary accommodation by 50% by 2010. It is not yet clear that this will have the impact of reducing short-term accommodation in Haringey. We are currently working with Housing officers to investigate the implications of this policy on pupil rolls and mobility in our schools.

Appendix 2

Detailed information about Planning Areas 1-14

- 11 To enable manageable analysis and planning, primary school roll data is provided in localities. As in the 2005 report the borough has been split into 14 planning areas. Each corresponds to one or more wards (the Greater London Demography system does not permit more than 14 areas). This appendix contains detailed demographic and trend data for each of the 14 planning areas.



| Planning Area (PA) | Wards |
|--------------------|--|
| 1 | Alexandra, Fortis Green and Muswell Hill |
| 2 | Highgate |
| 3 | Crouch End and Hornsey |
| 4 | Stroud Green |
| 5 | Harringay |
| 6 | St Ann's |
| 7 | Seven Sisters |
| 8 | Tottenham Green |
| 9 | Tottenham Hale |
| 10 | Northumberland Park |
| 11 | White Hart Lane |
| 12 | Bruce Grove and West Green |
| 13 | Noel Park |
| 14 | Bounds Green and Woodside |

12 For each planning area we show a range of information.

- The Planned Admission Number (PAN) compared with current reception numbers from the 2006 PLASC count.
- Total school roll trends and surplus capacity.
- School mobility.
- Summary of distances pupils live from their school.
- Completed and proposed major housing developments, with child yield estimates, where available.
- GLA projections & comparisons against first place preference information.

Notes:

- Admissions operate on an equal preference application system. First place preference data is used here simply as a measure of the number of unique applications for a school. It gives an indication of the number of children applying to Haringey schools.
 - For the September 2006 reception intake the council co-ordinated all maintained schools admissions in the borough. This has meant that parents can only express a 1st place preference at either a voluntary aid or community school, not both.
 - This means that direct comparison of 2006 preference data with that for 2002-2005 can be misleading. Until 2006, parents could express a preference for both a voluntary aided (church) school and a community school.

13 For each planning area there is a brief conclusion summing up the main characteristics of the data and the implications for the schools.

Planning area 1

14 This planning area incorporates the Muswell Hill, Fortis Green and Alexandra wards.

Table 1.1: Schools, PANs, reception numbers and unfilled reception places in planning area 1

| School | Planned admission number 2005 | Current Reception Nos. | Current Unfilled reception places |
|--------------------------------|--------------------------------------|-------------------------------|--|
| Coldfall Primary | 90 | 86 | 4 |
| Muswell Hill Primary | 60 | 60 | 0 |
| Our Lady of Muswell RC Primary | 60 | 59 | 1 |
| Rhodes Avenue Primary | 60 | 60 | 0 |
| St. James' CE Primary | 30 | 30 | 0 |
| Tetherdown Primary | Currently 30 (60 for Sep 06) | 30 | 0 |
| Totals | 330 | 325 | 5 |

Table 1.2 GLA projections for planning area 1

| Year | Number of Births for the equivalent school year | GLA 4 year old roll projection | Planned admission number | Total number 1st place preferences |
|-------------|--|---------------------------------------|---------------------------------|--|
| 2001/2 | | 294 | 300 | - |
| 2002/3 | 381 | 295 | 300 | 391 |
| 2003/4 | 429 | 292 | 300 | 448 |
| 2004/5 | 440 | 300 | 300 | 477 |
| 2005/6 | 424 | 325 | 330 | 439 |
| 2006/7 | 440 | 372 | 360 | 409 |
| 2007/8 | 485 | 358 | 360 | |
| 2008/9 | | 361 | 360 | |
| 2009/10 | | 358 | 360 | |
| 2010/11 | | 357 | 360 | |
| 2011/12 | | 355 | 360 | |

Table 1.3: First place preference information.

| School | 2002 | 2003 | 2004 | 2005 | 2006 |
|--------------------------------|-------------|-------------|-------------|-------------|-------------|
| Coldfall Primary | 68 | 63 | 97 | 78 | 55 |
| Muswell Hill Primary | 61 | 121 | 102 | 91 | 69 |
| Our Lady of Muswell RC Primary | 60 | 60 | 60 | 60 | 63 |
| Rhodes Avenue Primary | 94 | 78 | 102 | 114 | 93 |
| St. James' CE Primary | 56 | 55 | 56 | 58 | 34 |
| Tetherdown Primary | 52 | 71 | 60 | 38 | 95 |
| Totals | 391 | 448 | 477 | 439 | 409 |

Table 1.4: Total number of pupils on roll (reception to year 6)

| School | 2002 | 2003 | 2004 | 2005 | 2006 |
|---|--------------|--------------|--------------|--------------|--------------|
| Coldfall Primary* | 384 | 399 | 409 | 416 | 445 |
| Muswell Hill Primary | 420 | 420 | 418 | 420 | 420 |
| Our Lady of Muswell RC Primary** | 291 | 314 | 345 | 365 | 400 |
| Rhodes Avenue Primary | 412 | 418 | 241 | 421 | 419 |
| St. James' CE Primary | 211 | 208 | 205 | 207 | 206 |
| Tetherdown Primary | 212 | 213 | 213 | 214 | 213 |
| Totals | 1930 | 1972 | 2011 | 2043 | 2103 |
| Total Capacity | 1950 | 2010 | 2040 | 2070 | 2130 |
| Percentage of total Surplus capacity | 1.03% | 1.89% | 1.42% | 1.30% | 1.27% |

* coldfall expanded in Sep 96 to take 60 pupils per year and again sep 2005 to take 90 pupils per year.

** our lady of Muswell was expanded in sep 1999 to take 60 pupils.

Table 1.5: Total School Roll trends by year group

| Year | Reception | Year 1 | Year 2 | Year 3 | Year 4 | Year 5 | Year 6 | Total |
|-------------|------------------|---------------|---------------|---------------|---------------|---------------|---------------|--------------|
| 1997 | 265 | 233 | 263 | 243 | 266 | 227 | 218 | 1715 |
| 1998 | 265 | 262 | 237 | 268 | 238 | 268 | 229 | 1767 |
| 1999 | 256 | 267 | 266 | 233 | 267 | 235 | 266 | 1790 |
| 2000 | 293 | 260 | 269 | 265 | 237 | 263 | 236 | 1823 |
| 2001 | 262 | 296 | 267 | 268 | 273 | 238 | 261 | 1865 |
| 2002 | 294 | 295 | 301 | 267 | 270 | 266 | 237 | 1930 |
| 2003 | 295 | 299 | 292 | 292 | 264 | 267 | 263 | 1972 |
| 2004 | 290 | 303 | 296 | 292 | 294 | 267 | 269 | 2011 |
| 2005 | 300 | 291 | 303 | 296 | 296 | 292 | 265 | 2043 |
| 2006 | 325 | 299 | 293 | 300 | 298 | 297 | 291 | 2103 |

Table 1.6: 2005 Mobility

| School | KS1 | KS2 | Total |
|--------------------------------|------------|------------|--------------|
| Coldfall Primary | 4% | 32% | 23% |
| Muswell Hill Primary | 5% | 16% | 12% |
| Our Lady of Muswell RC Primary | 5% | 18% | 14% |
| Rhodes Avenue Primary | 2% | 12% | 8% |
| St. James' CE Primary | 5% | 18% | 14% |
| Tetherdown Primary | 0% | 10% | 7% |
| Total | 4% | 18% | 13% |

Table 1.7: Summary of distances pupils live from their school

| School Name | % of pupils postcode s mapped | % of pupils living between 0-0.3 miles from the school | % of pupils living between 0-0.6 miles from the school | % of pupils living between 0-1 miles from the school | % of pupils living 1 miles or more from the school |
|---------------------------------|-------------------------------------|---|---|---|--|
| Coldfall Primary School | 92% | 38% | 69% | 77% | 23% |
| Muswell Hill Primary School | 99% | 51% | 82% | 94% | 6% |
| Rhodes Avenue Primary School | 99% | 51% | 91% | 96% | 4% |
| Tetherdown Primary School | 99% | 70% | 90% | 96% | 4% |
| PA1 Total | 97% | 50% | 82% | 90% | 10% |

Completed building developments in PA1

There have been 12 major housing developments completed since 1996.

| Site | Number of units | Child yield calculation |
|-----------------------------|-----------------|-------------------------|
| 24a Church Crescent | 44 | 4 |
| 50-66 Park Road | 24 | 11 |
| 17 Muswell Hill | 11 | 5 |
| 91-105 Durnsford Road | 24 | 15 |
| 258-260 Alexandra Park Road | 18 | 34 |
| 135 Alexandra Park Road | 14 | 10 |
| Coppetts Road | 55 | 33 |
| Coppetts Road | 116 | 103 |
| Coppetts Road | 85 | 133 |
| 131 Coppetts Road | 10 | 7 |
| Southern road | 28 | 31 |
| 48-62 Fordington Road | 10 | 19 |
| Total | 439 | 405 |

Proposed housing developments in PA 1

There are a total of 3 major housing developments which have been granted planning approval. The estimated child yield (ages 0-15) would be 96.

| Site | Number of units | Child yield calculation |
|---|-----------------|-------------------------|
| Raglan Hall Hotel 8-12 Queens Avenue N10 | 18 | 9 |
| Lynxs Depot, Coppetts Road N10 2JR | 128 | 77 |
| 53-55 Quens Av. N10 3PE | 11 | 10 |
| Total | 157 | 96 |

Update on school building program

Coldfall

- 15 Work has begun and is on track for the scheduled completion

Tetherdown

- 16 The land required for the expansion had been purchased. The first additional cohort will be admitted in September 2006.

Children Centre development.

- 17 Rhodes Avenue Primary will have a children's centre to support the Alexandra community. This will be in Phase 3.
- 18 Partnership work with LB Barnet to develop a phase 3 children's centre to support the Fortis Green community.

Conclusion

- 19 The projections for 4 year olds show a continuing upward trend. This is supported by increasing birth rates and a number of housing developments. This area is characterized by low mobility at both key stages, steady growth in school population and high demand for school places.
- 20 This was an area with the highest pressure on places. To alleviate pressure the expansion of both Coldfall and Tetherdown schools have been consulted upon and agreed. Coldfall took their first 90-place reception in September 2005 and Tetherdown will have a 60-place reception open for September 2006. In creating these additional 60 reception places, we are confident that there will be enough local school places to meet current demand of local parents.
- 21 When running the September 2006 reception admissions cycle, it became apparent that with the expansion of both Coldfall and Tetherdown primary schools, the majority of local parents would be offered a reception place in one of their preferred local schools. A total of 18 parents were not offered any of their four preferences.
- 22 Although the figures in table 1.3 appear to show that demand could still exceed provision, this should be considered with caution:
- parents still have the option of having a 1st place preferences for schools in neighbouring boroughs, mainly Barnet.
 - A minority applicants are not local parents
- 23 The situation for school places in this area will be monitored and reviewed.

Planning area 2

24 This planning area incorporates Highgate ward.

Table 2.1: Schools, PANs, reception numbers and unfilled reception places in planning area 2

| School | Planned admission number 2005 | Current Reception Nos. | Current Unfilled reception places |
|----------------------------|--------------------------------------|-------------------------------|--|
| Highgate Primary School | 56 | 56 | 0 |
| St Michael's CE Primary N6 | 60 | 60 | 0 |
| PA – 2 Total | 116 | 116 | 0 |

Table 2.2 GLA projections for planning area 2

| Year | Number of Births for the equivalent school year | GLA 4 year old roll projection | Planned admission number | Total number 1st place preferences |
|-------------|--|---------------------------------------|---------------------------------|--|
| 2001/2 | | 110 | 116 | - |
| 2002/3 | 141 | 110 | 116 | 142 |
| 2003/4 | 164 | 115 | 116 | 174 |
| 2004/5 | 146 | 114 | 116 | 188 |
| 2005/6 | 142 | 116 | 116 | 162 |
| 2006/7 | 118 | 99 | 116 | 127 |
| 2007/8 | 176 | 116 | 116 | |
| 2008/9 | | 118 | 116 | |
| 2009/10 | | 117 | 116 | |
| 2010/11 | | 116 | 116 | |
| 2011/12 | | 115 | 116 | |

Table 2.3: First place preference information

| School | 2002 | 2003 | 2004 | 2005 | 2006 |
|----------------------------|-------------|-------------|-------------|-------------|-------------|
| Highgate Primary School | 56 | 74 | 88 | 62 | 46 |
| St Michael's CE Primary N6 | 86 | 100 | 100 | 100 | 81 |
| Totals | 142 | 174 | 188 | 162 | 127 |

Table 2.4: Total number of pupils on roll (reception to year 6)

| School | 2002 | 2003 | 2004 | 2005 | 2006 |
|---|--------------|--------------|-------------|--------------|---------------|
| Highgate Primary School* | 313 | 328 | 330 | 341 | 355 |
| St Michael's CE Primary N6 | 409 | 413 | 413 | 412 | 407 |
| Totals | 722 | 741 | 743 | 753 | 726 |
| Total Capacity | 786 | 812 | 812 | 812 | 812 |
| Percentage of total Surplus capacity | 8.14% | 8.74% | 8.5% | 7.27% | 10.59% |

*Highgate primary was expanded in Sep 1996 to take 56 pupils.

Table 2.5: Total School Roll trends by year group

| Year | Reception | Year 1 | Year 2 | Year 3 | Year 4 | Year 5 | Year 6 | Total |
|------|-----------|--------|--------|--------|--------|--------|--------|-------|
| 1997 | 107 | 100 | 97 | 88 | 99 | 93 | 83 | 667 |
| 1998 | 111 | 104 | 99 | 89 | 80 | 92 | 83 | 658 |
| 1999 | 111 | 106 | 107 | 92 | 89 | 79 | 95 | 679 |
| 2000 | 98 | 115 | 102 | 96 | 89 | 85 | 70 | 655 |
| 2001 | 118 | 101 | 113 | 102 | 94 | 85 | 88 | 701 |
| 2002 | 110 | 112 | 102 | 103 | 101 | 99 | 85 | 712 |
| 2003 | 110 | 110 | 107 | 103 | 111 | 103 | 97 | 741 |
| 2004 | 115 | 111 | 113 | 103 | 100 | 102 | 99 | 743 |
| 2005 | 114 | 116 | 116 | 101 | 100 | 101 | 105 | 753 |
| 2006 | 116 | 114 | 115 | 98 | 99 | 98 | 104 | 744 |

Table 2.6: 2005 Mobility

| School | KS1 | KS2 | Total |
|----------------------------|------------|------------|------------|
| Highgate Primary School | 17% | 43% | 33% |
| St Michael's CE Primary N6 | 4% | 22% | 15% |
| Totals | 10% | 31% | 23% |

Table 2.7: Summary of distances pupils live from their school

| School Name | % of pupils postcodes mapped | % of pupils living between 0-0.3 miles from the school | % of pupils living between 0-0.6 miles from the school | % of pupils living between 0-1 miles from the school | % of pupils living 1 miles or more from the school |
|-------------------------|------------------------------|--|--|--|--|
| Highgate Primary School | 96% | 16% | 38% | 60% | 40% |
| PA2 Total | 96% | 16% | 38% | 60% | 40% |

Completed building developments in PA 2

There have been 2 major housing developments completed since 1996.

| Site | Number of units | Child yield calculation |
|------------------------------|-----------------|-------------------------|
| 16-18 Stanhope Road | 20 | 12 |
| Cholmeley Dene / Copley Dene | 21 | 26 |
| Total | 41 | 38 |

Proposed housing developments in PA 2

There is one proposed major housing developments in PA2

| Site | Number of units | Child yield calculation |
|---|------------------------|--------------------------------|
| Elizabeth House, Winchester Place N6 | 19 | 9 |
| Total | 19 | 9 |

Children's Centre development.

25 Highgate Primary will have a children's centre to support the Highgate community. This will be in Phase 2.

Conclusion

- 26 The roll projections for 4 year olds indicated relative stability around the current numbers. This area has low mobility during key stage 1, but very high mobility during key stage 2. There has been a steady growth in the school population over the past 10 years.
- 27 There is demand for school places in Highgate ward; however with the extra 60 reception places being created by the expansion of Coleridge primary in Crouch End, and the additional 60 in planning area 1, we consider that there is no need to have additional places in this area.
- 28 There are relatively few major building works and no known plans in the area that would have additional impact upon the demand for school places.
- 29 Work is needed to understand the reasons for the high mobility during key stage 2.
- 30 The need for school places in this PA will be kept under regular review.

Planning area 3

31 This planning area incorporates the Hornsey and Crouch End wards.

Table 3.1: Schools, PANs, reception numbers and unfilled reception places in planning area 3

| School | Planned admission number 2005 | Current Reception Nos. | Current Unfilled reception places |
|-------------------------------|-------------------------------|------------------------|-----------------------------------|
| Campsbourne Infants | 60 | 60 | 0 |
| Campsbourne Junior | | | |
| Coleridge Primary* | 60 | 60 | 0 |
| Rokesly Infants | 90 | 90 | 0 |
| Rokesly Junior | | | |
| St Gildas' RC Junior | | | |
| St Mary's CE Infant | 60 | 60 | 0 |
| St Mary's CE Junior | | | |
| St Peter in Chains RC Infants | 60 | 57 | 3 |
| Totals | 330 | 327 | 3 |

*120 from Sep 2007

Table 3.2 GLA projections for planning area 3

| Year | Number of Births for the equivalent school year | GLA 4 year old roll projection | Planned admission number | Total number 1 st place preferences |
|---------|---|--------------------------------|--------------------------|--|
| 2001/2 | | 316 | 321 | - |
| 2002/3 | 317 | 311 | 321 | 410 |
| 2003/4 | 350 | 310 | 330 | 390 |
| 2004/5 | 347 | 324 | 330 | 418 |
| 2005/6 | 370 | 327 | 330 | 422 |
| 2006/7 | 381 | 375 | 330 | 385 |
| 2007/8 | 395 | 370 | 390 | |
| 2008/9 | | 373 | 390 | |
| 2009/10 | | 369 | 390 | |
| 2010/11 | | 368 | 390 | |
| 2011/12 | | 368 | 390 | |

Table 3.3: First place preference information

| School | 2002 | 2003 | 2004 | 2005 | 2006 |
|-------------------------------|------------|------------|------------|------------|------------|
| Campsbourne Infants | 57 | 45 | 63 | 49 | 40 |
| Campsbourne Junior | | | | | |
| Coleridge Primary | 108 | 100 | 104 | 114 | 132 |
| Rokesly Infants | 111 | 105 | 111 | 119 | 89 |
| Rokesly Junior | | | | | |
| St Gildas' RC Junior | | | | | |
| St Mary's CE Infant | 74 | 80 | 80 | 80 | 67 |
| St Mary's CE Junior | | | | | |
| St Peter in Chains RC Infants | 60 | 60 | 60 | 60 | 57 |
| Totals | 410 | 390 | 418 | 422 | 385 |

Table 3.4: Total number of pupils on roll (reception to year 6)

| School | 2002 | 2003 | 2004 | 2005 | 2006 |
|---|-------------|-------------|-------------|-------------|-------------|
| Campsbourne Infants / Junior | 462 | 405 | 373 | 356 | 343 |
| Coleridge Primary | 419 | 417 | 416 | 415 | 411 |
| Rokesly Infants / Junior* | 575 | 563 | 582 | 576 | 587 |
| St Gildas' RC Junior | 217 | 203 | 209 | 213 | 213 |
| St Mary's CE Infant / Junior | 387 | 375 | 386 | 390 | 395 |
| St Peter in Chains RC Infants | 161 | 163 | 165 | 162 | 172 |
| Totals | 2221 | 2126 | 2131 | 2112 | 2121 |
| Total Capacity | 2247 | 2256 | 2265 | 2274 | 2283 |
| Percentage of total Surplus capacity | 1.6% | 5.7% | 5.9% | 7.1% | 7% |

*Rokesly was expanded in Sep 2003 to take 90 pupils.

Table 3.5: Total School Roll trends by year group

| Year | Rolls PA 3 | | | | | | | total |
|------|------------|--------|--------|--------|--------|--------|--------|-------|
| | Reception | Year 1 | Year 2 | Year 3 | Year 4 | Year 5 | Year 6 | |
| 1997 | 332 | 326 | 360 | 335 | 302 | 308 | 301 | 2264 |
| 1998 | 339 | 338 | 328 | 330 | 334 | 312 | 308 | 2289 |
| 1999 | 331 | 344 | 337 | 323 | 322 | 318 | 313 | 2288 |
| 2000 | 324 | 327 | 339 | 315 | 320 | 313 | 299 | 2237 |
| 2001 | 331 | 319 | 320 | 326 | 313 | 307 | 304 | 2220 |
| 2002 | 316 | 328 | 310 | 317 | 337 | 314 | 299 | 2221 |
| 2003 | 311 | 315 | 318 | 295 | 289 | 311 | 287 | 2126 |
| 2004 | 310 | 313 | 313 | 310 | 297 | 287 | 301 | 2131 |
| 2005 | 324 | 302 | 304 | 317 | 294 | 284 | 287 | 2112 |
| 2006 | 327 | 324 | 300 | 293 | 311 | 285 | 281 | 2121 |

Table 3.6: 2005 Mobility

| School | KS1 | KS2 | Total |
|--------------------------------|-----------|------------|------------|
| Campsbourne Infants | 16% | | 16% |
| Campsbourne Junior | | 12% | 12% |
| Coleridge Primary | 7% | 20% | 16% |
| Rokesly Infants | 6% | | 6% |
| Rokesly Junior | | 13% | 13% |
| St Gildas' RC Junior | | 7% | 7% |
| St Mary's CE Infant | 15% | | 15% |
| St Mary's CE Junior | | 17% | 17% |
| St Peter in Chains RC Infants* | 1% | | 1% |
| Totals | 7% | 14% | 12% |

Table 3.7: Summary of distances pupils live from their school

| School Name | % of pupils postcodes mapped | % of pupils living between 0-0.3 miles from the school | % of pupils living between 0-0.6 miles from the school | % of pupils living between 0-1 miles from the school | % of pupils living 1 miles or more from the school |
|----------------------------|------------------------------|--|--|--|--|
| Campsbourne Infants School | 95% | 50% | 72% | 86% | 14% |
| Campsbourne Junior School | 95% | 53% | 67% | 85% | 15% |
| Coleridge Primary School | 98% | 43% | 81% | 91% | 9% |
| Rokesly Infant School | 95% | 55% | 89% | 94% | 6% |
| Rokesly Junior School | 97% | 52% | 83% | 90% | 10% |
| PA3 Total | 96% | 50% | 80% | 90% | 10% |

Completed building developments in PA 3

There have been 7 major housing developments completed since 1996.

| Site | Number of units | Child yield calculation |
|--|-----------------|-------------------------|
| Former Hornsey waterworks (phase i) | 223 | 40 |
| 130-132 Tottenham Lane | 75 | 29 |
| Duke House, 75 Crouch Hall Road | 14 | 8 |
| Telecom House , Crouch End Hill | 78 | 37 |
| Holly Innocents Vicarage, Hillfield Avenue | 12 | 5 |
| 122 Hillfield Avenue | 21 | 15 |
| 12 Shepherds Hill | 15 | 8 |
| Total | 438 | 142 |

Proposed housing developments in PA 3

There are 5 major housing developments currently being considered and 3 major housing developments granted by the planners

| Site | Decision | Number of units | Child yield calculation |
|---|----------|------------------|-------------------------|
| 72-96 Park Road N8 | Pending | 40 | 12 |
| 9 Waverley Road N8 9QS | Pending | 19 | 7 |
| 159 Tottenham Lane N8 | Pending | 18 | 5 |
| Pembury Works,Campsbourne Road N8 | Pending | 33 | 14 |
| Womersley House, Womersley Road and, Dickenson House Dickenson Road | Pending | 44 | 27 |
| Telecom House Crouch End Hill | Granted | 84 | 40 |
| 124 Hillfield Avenue N8 | Granted | 11 | 4 |
| Former Hornsey Waterworks High Street N8 | Granted | 397 | 109 |
| Total | | 249 (646) | 109 (218) |

Children's Centre development.

- 32 Stonecroft children's centre will support the Hornsey & Muswell Hill communities. This will be in Phase 1.
- 33 Campsbourne Play centre will provide some children centre services and link into Stonecroft children's centre. This will be in Phase 2.
- 34 Campsbourne Infant & Junior schools will have a children's centre to support the Hornsey community. This will be in Phase 2
- 35 Rokesly Infant school will have a children's centre to support the Crouch End community. This will be in Phase 2

- 36 Rokesly Junior school will provide some children centre services and link into Rokesly Infant school children's centre. This will be in Phase 2.
- 37 Hornsey YMCA will provide some children centre services and link into Rokesly Infant school children's centre. This will be in Phase 2.

Conclusion

- 38 The projections for 4 year olds show a continuing upward trend. This is supported by increasing birth rates and a number of housing developments. This area is characterized by low mobility at both key stages, steady growth in school population and high demand for school places.
- 39 At the time of writing Campsbourne infant and junior schools have consulted and agreed that both schools would be merged together by creating a hard federation.
- 40 During September 05 to January 06 a full public consultation was conducted on the proposal to expand Coleridge primary school to 4 forms of entry by using the Ex-TUC site. The School Organisation Committee (SOC) met on 19th January to consider the proposal. The SOC could not unanimously agree the expansion of Coleridge School, so the proposal was submitted to The Office of the Schools Adjudicator to make the decision.
- 41 The adjudicator approved the proposal but changed the date the expansion would come into effect. Coleridge will take their first reception class of 120 pupils in September 2007. The approval is conditional on planning permission being granted by 31 January 2007.
- 42 In creating these additional 60 reception places, we are confident that there will be enough local school places to meet current and future demand of local parents.

Planning area 4

43 This planning area incorporates Stroud Green ward.

Table 4.1: Schools, PANs, reception numbers and unfilled reception places in planning area 4

| School | Planned admission number 2005 | Current Reception Nos. | Current Unfilled reception places |
|---------------|--------------------------------------|-------------------------------|--|
| St Aidan's | 30 | 30 | 0 |
| Stroud Green | 60 | 58 | 2 |
| Weston Park | 30 | 30 | 0 |
| Totals | 120 | 118 | 2 |

Table 4.2 GLA projections for planning area 4

| Year | Number of Births for the equivalent school year | GLA 4 year old roll projection | Planned admission number | Total number 1st place preferences |
|-------------|--|---------------------------------------|---------------------------------|--|
| 2001/2 | | 122 | 120 | - |
| 2002/3 | 188 | 118 | 120 | 145 |
| 2003/4 | 195 | 111 | 120 | 155 |
| 2004/5 | 182 | 109 | 120 | 188 |
| 2005/6 | 172 | 118 | 120 | 181 |
| 2006/7 | 183 | 135 | 120 | 136 |
| 2007/8 | 187 | 131 | 120 | |
| 2008/9 | | 131 | 120 | |
| 2009/10 | | 127 | 120 | |
| 2010/11 | | 125 | 120 | |
| 2011/12 | | 122 | 120 | |

Table 4.3: First place preference information

| School | 2002 | 2003 | 2004 | 2005 | 2006 |
|---------------|-------------|-------------|-------------|-------------|-------------|
| St Aidan's | 49 | 62 | 78 | 73 | 57 |
| Stroud Green | 57 | 54 | 51 | 45 | 41 |
| Weston Park | 39 | 39 | 59 | 63 | 38 |
| Totals | 145 | 155 | 188 | 181 | 136 |

Table 4.4: Total number of pupils on roll (reception to year 6)

| School | 2002 | 2003 | 2004 | 2005 | 2006 |
|----------------------------|-------------|-------------|-------------|-------------|-------------|
| St Aidan's | 212 | 210 | 210 | 210 | 209 |
| Stroud Green | 379 | 372 | 344 | 328 | 333 |
| Weston Park | 233 | 232 | 231 | 229 | 226 |
| Totals | 824 | 814 | 785 | 767 | 768 |
| Total Capacity | 840 | 840 | 840 | 840 | 840 |
| Percentage of total | 1.9% | 3.1% | 6.5% | 8.6% | 8.5% |
| Surplus capacity | | | | | |

Table 4.5: Total School Roll trends by year group

| Year | Rolls PA 4 | | | | | | | total |
|------|------------|--------|--------|--------|--------|--------|--------|-------|
| | Reception | Year 1 | Year 2 | Year 3 | Year 4 | Year 5 | Year 6 | |
| 1997 | 134 | 128 | 74 | 76 | 70 | 73 | 54 | 609 |
| 1998 | 128 | 130 | 118 | 109 | 78 | 69 | 76 | 708 |
| 1999 | 138 | 124 | 132 | 117 | 109 | 72 | 66 | 758 |
| 2000 | 129 | 118 | 110 | 129 | 115 | 109 | 69 | 779 |
| 2001 | 145 | 130 | 117 | 110 | 125 | 112 | 109 | 848 |
| 2002 | 118 | 145 | 112 | 120 | 114 | 111 | 109 | 829 |
| 2003 | 118 | 118 | 136 | 111 | 110 | 110 | 111 | 814 |
| 2004 | 111 | 117 | 113 | 131 | 101 | 103 | 109 | 785 |
| 2005 | 109 | 109 | 113 | 111 | 126 | 102 | 97 | 767 |
| 2006 | 118 | 114 | 104 | 107 | 105 | 120 | 100 | 768 |

Table 4.6: 2005 Mobility

| School | KS1 | KS2 | Total |
|---------------|-----------|------------|------------|
| St Aidan's | 0% | 19% | 13% |
| Stroud Green | 6% | 19% | 14% |
| Weston Park | 7% | 16% | 13% |
| Totals | 4% | 19% | 14% |

Table 4.7: Summary of distances pupils live from their school

| School Name | % of pupils postcodes mapped | % of pupils living between 0-0.3 miles from the school | % of pupils living between 0-0.6 miles from the school | % of pupils living between 0-1 miles from the school | % of pupils living 1 miles or more from the school |
|-----------------------------|------------------------------|--|--|--|--|
| Stroud Green Primary School | 96% | 50% | 77% | 84% | 16% |
| Weston Park Primary School | 99% | 72% | 83% | 91% | 9% |
| PA4 Total | 97% | 59% | 80% | 87% | 13% |

Completed building developments in PA 4

There has been one major housing development in this area.

| Site | Number of units | Child yield calculation |
|----------------------------|------------------------|--------------------------------|
| 6-18 Mount Pleasant Villas | 16 | 5 |

Proposed housing developments in PA 4

There are no major housing developments proposed in PA4

Children’s Centre development.

- 44 Stroud Green Primary school will have a children’s centre to support the Stroud Green community. This will be in phase 1

Conclusion

- 45 The roll projections for 4 year olds indicated relative stability around the current numbers. This area has a low mobility during key stages. The school population has fluctuated over the past 10 years, but has become more stable in the past 3 years. There is one major building works and no known plans in the area that would have additional impact upon the demand for school places.
- 46 Although there is a high demand for both St Aidans and Weston Park Primary schools, Stroud Green Primary school remains under-subscribed.
- 47 With the extra 60 reception places being created by the expansion of Coleridge primary in Crouch End, there is no need to create additional places in this area.
- 48 This situation will be kept under continuous review.

Planning area 5

49 This planning area incorporates Harringay ward.

Table 5.1: Schools, PANs, reception numbers and unfilled reception places in planning area 5

| School | Planned admission number 2005 | Current Reception Nos. | Current Unfilled reception places |
|-------------------------|-------------------------------|------------------------|-----------------------------------|
| North Harringay Primary | 81 | 75 | 6 |
| South Harringay Infants | 60 | 58 | 2 |
| South Harringay Juniors | | | |
| Totals | 141 | 133 | 8 |

Table 5.2 GLA projections for planning area 5

| Year | Number of Births for the equivalent school year | GLA 4 year old roll projection | Planned admission number | Total number 1 st place preferences |
|---------|---|--------------------------------|--------------------------|--|
| 2001/2 | | 138 | 141 | - |
| 2002/3 | 206 | 121 | 141 | 118 |
| 2003/4 | 194 | 110 | 141 | 138 |
| 2004/5 | 198 | 139 | 141 | 118 |
| 2005/6 | 191 | 133 | 141 | 117 |
| 2006/7 | 215 | 162 | 141 | 105 |
| 2007/8 | 219 | 164 | 141 | |
| 2008/9 | | 169 | 141 | |
| 2009/10 | | 173 | 141 | |
| 2010/11 | | 173 | 141 | |
| 2011/12 | | 171 | 141 | |

Table 5.3: First place preference information

| School | 2002 | 2003 | 2004 | 2005 | 2006 |
|-------------------------|------------|------------|------------|------------|------------|
| North Harringay Primary | 63 | 64 | 67 | 68 | 49 |
| South Harringay Infants | 55 | 74 | 51 | 49 | 56 |
| South Harringay Juniors | | | | | |
| Total | 118 | 138 | 118 | 117 | 105 |

Table 5.4: Total number of pupils on roll (reception to year 6)

| School | 2002 | 2003 | 2004 | 2005 | 2006 |
|---|---------------|---------------|---------------|---------------|---------------|
| North Harringay Primary | 424 | 423 | 410 | 434 | 441 |
| South Harringay Infants | 177 | 176 | 170 | 177 | 172 |
| South Harringay Juniors | 221 | 235 | 224 | 223 | 230 |
| Totals | 822 | 834 | 804 | 834 | 847 |
| Total Capacity | 987 | 987 | 987 | 987 | 987 |
| Percentage of total Surplus capacity | 16.71% | 15.50% | 18.54% | 15.50% | 14.18% |

Table 5.5: Total School Roll trends by year group

| Year | Rolls PA 5 | | | | | | | total |
|------|------------|--------|--------|--------|--------|--------|--------|-------|
| | Reception | Year 1 | Year 2 | Year 3 | Year 4 | Year 5 | Year 6 | |
| 1997 | 137 | 137 | 143 | 124 | 126 | 110 | 113 | 890 |
| 1998 | 134 | 145 | 127 | 150 | 125 | 132 | 116 | 929 |
| 1999 | 128 | 146 | 147 | 120 | 150 | 117 | 132 | 940 |
| 2000 | 116 | 129 | 132 | 134 | 117 | 144 | 119 | 891 |
| 2001 | 127 | 107 | 124 | 130 | 129 | 109 | 147 | 873 |
| 2002 | 138 | 118 | 107 | 115 | 120 | 118 | 106 | 822 |
| 2003 | 121 | 139 | 114 | 107 | 115 | 118 | 120 | 834 |
| 2004 | 108 | 119 | 131 | 114 | 101 | 116 | 115 | 804 |
| 2005 | 139 | 116 | 121 | 136 | 116 | 97 | 109 | 834 |
| 2006 | 134 | 127 | 115 | 117 | 140 | 112 | 102 | 847 |

Table 5.6: 2005 Mobility

| School | KS1 | KS2 | Total |
|-------------------------|------------|------------|------------|
| North Harringay Primary | 8% | 23% | 18% |
| South Harringay Infants | 16% | | 16% |
| South Harringay Juniors | | 32% | 32% |
| Total | 12% | 27% | 22% |

Table 5.7: Summary of distances pupils live from their school

| School Name | % of pupils postcodes mapped | % of pupils living between 0-0.3 miles from the school | % of pupils living between 0-0.6 miles from the school | % of pupils living between 0-1 miles from the school | % of pupils living 1 miles or more from the school |
|--------------------------------|------------------------------|--|--|--|--|
| North Harringay Primary School | 95% | 59% | 78% | 85% | 15% |
| South Harringay Infant School | 96% | 62% | 89% | 95% | 5% |
| South Harringay Junior School | 97% | 53% | 79% | 88% | 12% |
| PA5 Total | 96% | 58% | 81% | 88% | 12% |

Completed building developments in PA 5

There have been 8 major housing developments completed since 1996.

| Site | Number of units | Child yield calculation |
|--|-----------------|-------------------------|
| Former filling station, 278b Wightman Road | 14 | 7 |
| Coliseum, Green Lanes | 15 | 1 |
| Dylan Thomas House, Denmark Road | 31 | 31 |
| 4-14 The Mews, Turnpike Lane | 12 | 3 |
| 461 West Green Road | 12 | 1 |
| Railway Approach, 010 Wightman Road | 13 | 1 |
| Dylan Thomas House, Denmark Road | 12 | 6 |
| Wightman road depot, Wightman Road | 17 | 2 |
| Total | 126 | 52 |

Proposed housing developments in PA 5

There are no major housing developments proposed in PA 5

Children's Centre development.

- 50 South Harringay Infant & Junior schools will have a children's centre to support the Harringay community. This will be in Phase 2
- 51 North Harringay Primary school will provide some children centre services and link into South Harringay Infant & Junior school children's centre. This will be in Phase 2.

Conclusion

- 52 The roll projections for 4 year olds indicated relative stability around the current numbers. The school population has fluctuated over the past 10 years, but has become more stable in the past 2 years.
- 53 Although it appears that reception places in Harringay ward are close to maximum, this may not necessarily be a true representation of place demand in this area. Schools in this area continue to receive allocations of children whose parents' preferences were for the Crouch End area. With the additional 60 reception places being created from the expansion of Coleridge primary, in future some of these parents will receive places more local to them and will not have to cross the travel barrier of the Kings Cross railway line. This may alleviate some of the demand on these two schools.

- 54 The situation will be closely monitored to establish the effects of additional school places in Crouch End on both North and South Harringay schools. If demand grows, then the possibility of expanding North Harringay to a 90-place reception will be explored.

Planning area 6

55 This planning area incorporates St Ann's, and parts of Seven Sisters and West Green wards.

Table 6.1: Schools, PANs, reception numbers and unfilled reception places in planning area 6

| School | Planned admission number 2005 | Current Reception Nos. | Current Unfilled reception places |
|------------------------|-------------------------------|------------------------|-----------------------------------|
| Chestnuts Primary | 60 | 60 | 0 |
| Seven Sisters Primary* | 81 | 68 | 13 |
| St Ann's CE Primary | 30 | 28 | 2 |
| St John Vianney RC | 30 | 30 | 0 |
| St Mary's RC Infant | 60 | 53 | 7 |
| St Mary RC Junior | | | |
| West Green Primary | 30 | 34 | +4 |
| Totals | 291 | 273 | 18 |

*60 from Sep 2007

Table 6.2 GLA projections for planning area 6

| Year | Number of Births for the equivalent school year | GLA 4 year old roll projection | Planned admission number | Total number 1 st place preferences |
|---------|---|--------------------------------|--------------------------|--|
| 2001/2 | | 296 | 291 | - |
| 2002/3 | 198 | 285 | 291 | 310 |
| 2003/4 | 222 | 271 | 291 | 303 |
| 2004/5 | 212 | 284 | 291 | 300 |
| 2005/6 | 215 | 273 | 291 | 307 |
| 2006/7 | 233 | 275 | 291 | 222 |
| 2007/8 | 214 | 293 | 270 | |
| 2008/9 | | 302 | 270 | |
| 2009/10 | | 307 | 270 | |
| 2010/11 | | 313 | 270 | |
| 2011/12 | | 315 | 270 | |

Table 6.3: First place preference information

| School | 2002 | 2003 | 2004 | 2005 | 2006 |
|-----------------------|------------|------------|------------|------------|------------|
| Chestnuts Primary | 47 | 63 | 53 | 60 | 30 |
| Seven Sisters Primary | 82 | 60 | 62 | 56 | 36 |
| St Ann's CE Primary | 53 | 50 | 50 | 50 | 28 |
| St John Vianney RC | 30 | 30 | 30 | 30 | 36 |
| St Mary's RC Infant | 56 | 56 | 58 | 56 | 53 |
| St Mary RC Junior | | | | | |
| West Green Primary | 42 | 44 | 47 | 55 | 39 |
| Total | 310 | 303 | 300 | 307 | 222 |

Table 6.4: Total number of pupils on roll (reception to year 6)

| School | 2002 | 2003 | 2004 | 2005 | 2006 |
|---|--------------|--------------|--------------|--------------|--------------|
| Chestnuts Primary | 397 | 405 | 397 | 394 | 401 |
| Seven Sisters Primary | 584 | 574 | 523 | 533 | 515 |
| St Ann's CE Primary | 206 | 210 | 203 | 209 | 198 |
| St John Vianney RC | 207 | 210 | 202 | 201 | 202 |
| St Mary's RC Infant | 178 | 176 | 120 | 178 | 172 |
| St Mary RC Junior | 235 | 236 | 235 | 239 | 230 |
| West Green Primary | 214 | 210 | 198 | 220 | 220 |
| Total | 2021 | 2007 | 1938 | 1974 | 1938 |
| Total Capacity | 2037 | 2037 | 2037 | 2037 | 2037 |
| Percentage of total Surplus capacity | 0.79% | 1.47% | 4.86% | 3.10% | 4.86% |

Table 6.5: Total School Roll trends by year group

| Year | Rolls PA 6 | | | | | | | total |
|------|------------|--------|--------|--------|--------|--------|--------|-------|
| | Reception | Year 1 | Year 2 | Year 3 | Year 4 | Year 5 | Year 6 | |
| 1997 | 307 | 300 | 295 | 284 | 294 | 260 | 274 | 2014 |
| 1998 | 276 | 308 | 293 | 289 | 281 | 297 | 261 | 2005 |
| 1999 | 284 | 282 | 298 | 276 | 289 | 283 | 290 | 2002 |
| 2000 | 302 | 293 | 276 | 286 | 281 | 283 | 282 | 2003 |
| 2001 | 286 | 303 | 293 | 274 | 294 | 288 | 281 | 2019 |
| 2002 | 296 | 287 | 293 | 293 | 275 | 291 | 286 | 2021 |
| 2003 | 285 | 303 | 285 | 290 | 284 | 271 | 289 | 2007 |
| 2004 | 230 | 290 | 293 | 278 | 294 | 288 | 265 | 1938 |
| 2005 | 284 | 274 | 286 | 291 | 267 | 284 | 288 | 1974 |
| 2006 | 273 | 284 | 269 | 275 | 281 | 273 | 283 | 1938 |

Table 6.6: 2005 Mobility

| School | KS1 | KS2 | Total |
|-----------------------|-----------|------------|------------|
| Chestnuts Primary | 6% | 22% | 17% |
| Seven Sisters Primary | 13% | 36% | 29% |
| St Ann's CE Primary | 31% | 4% | 22% |
| St John Vianney RC | 20% | 7% | 16% |
| St Mary's RC Infant | 5% | | 5% |
| St Mary RC Junior | | 14% | 14% |
| West Green Primary | 13% | 43% | 31% |
| Total | 8% | 30% | 22% |

Table 6.7: Summary of distances pupils live from their school

| School Name | % of pupils postcodes mapped | % of pupils living between 0-0.3 miles from the school | % of pupils living between 0-0.6 miles from the school | % of pupils living between 0-1 miles from the school | % of pupils living 1 miles or more from the school |
|------------------------------|------------------------------|--|--|--|--|
| Chestnut's Primary School | 93% | 44% | 70% | 86% | 14% |
| Seven Sisters Primary School | 96% | 59% | 80% | 91% | 9% |
| West Green Primary School | 100% | 51% | 75% | 89% | 11% |
| PA6 Total | 96% | 52% | 75% | 89% | 11% |

Completed building developments in PA 6

There have been 3 major housing developments completed since 1996.

| Site | Number of units | Child yield calculation |
|---|-----------------|-------------------------|
| 250-266 St Anne's Road | 71 | 31 |
| The Salisbury Public House, Green Lanes | 14 | 1 |
| Conway Road Depot, Conway Road | 11 | 4 |
| Total | 96 | 36 |

Proposed housing developments in PA 6

No major housing developments application have been submitted to planners in PA 6

- 56 The site of the St Ann's hospital has been identified as a possible location to build 500 units. However this plan can not be further developed until the PCT have completed a service provision review and determined where services will be located.

Children's Centre development.

- 57 Woodlands Park Children's centre (formally Known as Woodlands Park EEC & Nursery). This is a phase one centre and offers the full range of services.
- 58 Seven Sisters Primary school will have a children's centre to support the St Ann's & part Tottenham Green communities. This will be in Phase 2

Conclusion

- 59 The birth rate and reception class projections indicate relative stability, however in reality the number of reception pupils has slight declined. Reception applications have declined by 87. This could be a result of co-ordinated admissions or a shift in location of temporary housing. This area has low mobility during key stage 1, but high mobility during key stage 2. The school population has fluctuated over the past 10 years, and are currently at their lowest.
- 60 There are relatively few major housing developments and no current plans that would affect the current pupil roll situation.
- 61 In response to the current declining rolls Seven Sister's primary PAN has been reduced to 60 from 81. St Mary's RC infant and junior schools have consulted on and agreed that both schools should be merged by creating a hard federation.
- 62 This situation will be kept under annual review.

Planning area 7

63 This planning area incorporates the majority of Seven Sisters ward.

Table 7.1: Schools, PANs, reception numbers and unfilled reception places in planning area 7

| School | Planned admission number 2005 | Current Reception Nos. | Current Unfilled reception places |
|------------------------|--------------------------------------|-------------------------------|--|
| Crowland | 60 | 51 | 9 |
| St Ignatius RC primary | 60 | 50 | 10 |
| Stamford Hill primary | 30 | 27 | 3 |
| Tiverton primary | 60 | 45 | 15 |
| Totals | 210 | 173 | 37 |

Table 7.2 GLA projections for planning area 7

| Year | Number of Births for the equivalent school year | GLA 4 year old roll projection | Planned admission number | Total number 1st place preferences |
|-------------|--|---------------------------------------|---------------------------------|--|
| 2001/2 | | 211 | 210 | |
| 2002/3 | 278 | 205 | 210 | 215 |
| 2003/4 | 244 | 189 | 210 | 192 |
| 2004/5 | 242 | 169 | 210 | 205 |
| 2005/6 | 240 | 173 | 210 | 187 |
| 2006/7 | 240 | 164 | 210 | 135 |
| 2007/8 | 268 | 178 | 210 | |
| 2008/9 | | 183 | 210 | |
| 2009/10 | | 185 | 210 | |
| 2010/11 | | 189 | 210 | |
| 2011/12 | | 191 | 210 | |

Table 7.3: First place preference information

| School | 2002 | 2003 | 2004 | 2005 | 2006 |
|------------------------|-------------|-------------|-------------|-------------|-------------|
| Crowland | 57 | 59 | 54 | 55 | 24 |
| St Ignatius RC primary | 65 | 65 | 65 | 65 | 59 |
| Stamford Hill primary | 42 | 28 | 42 | 30 | 18 |
| Tiverton primary | 51 | 40 | 44 | 37 | 34 |
| Total | 215 | 192 | 205 | 187 | 135 |

Table 7.4: Total number of pupils on roll (reception to year 6)

| School | 2002 | 2003 | 2004 | 2005 | 2006 |
|---|--------------|---------------|---------------|---------------|---------------|
| Crowland | 392 | 380 | 367 | 348 | 343 |
| St Ignatius RC primary | 419 | 396 | 342 | 357 | 363 |
| Stamford Hill primary | 201 | 187 | 188 | 193 | 187 |
| Tiverton primary | 338 | 343 | 314 | 318 | 344 |
| Total | 1350 | 1306 | 1211 | 1216 | 1237 |
| Total Capacity | 1470 | 1470 | 1470 | 1470 | 1470 |
| Percentage of total Surplus capacity | 8.16% | 11.16% | 17.62% | 17.28% | 15.85% |

Table 7.5: Total School Roll trends by year group

| Year | Rolls PA 7 | | | | | | | total |
|------|------------|--------|--------|--------|--------|--------|--------|-------|
| | Reception | Year 1 | Year 2 | Year 3 | Year 4 | Year 5 | Year 6 | |
| 1997 | 197 | 199 | 179 | 202 | 179 | 165 | 168 | 1289 |
| 1998 | 188 | 204 | 190 | 179 | 205 | 174 | 171 | 1311 |
| 1999 | 182 | 204 | 203 | 198 | 170 | 195 | 175 | 1327 |
| 2000 | 189 | 171 | 189 | 202 | 186 | 164 | 200 | 1301 |
| 2001 | 201 | 190 | 169 | 188 | 203 | 186 | 169 | 1306 |
| 2002 | 221 | 211 | 183 | 165 | 190 | 202 | 178 | 1350 |
| 2003 | 205 | 199 | 184 | 182 | 149 | 183 | 204 | 1306 |
| 2004 | 153 | 190 | 188 | 181 | 169 | 148 | 182 | 1211 |
| 2005 | 169 | 178 | 194 | 182 | 174 | 170 | 149 | 1216 |
| 2006 | 173 | 158 | 183 | 196 | 192 | 171 | 164 | 1237 |

Table 7.6: 2005 Mobility

| School | KS1 | KS2 | Total |
|------------------------|------------|------------|------------|
| Crowland | 14% | 34% | 27% |
| St Ignatius RC primary | 3% | 16% | 11% |
| Stamford Hill primary | 24% | 43% | 37% |
| Tiverton primary | 8% | 41% | 28% |
| Total | 10% | 33% | 25% |

Table 7.7: Summary of distances pupils live from their school

| School Name | % of pupils postcodes mapped | % of pupils living between 0-0.3 miles from the school | % of pupils living between 0-0.6 miles from the school | % of pupils living between 0-1 miles from the school | % of pupils living 1 miles or more from the school |
|------------------------------|------------------------------|--|--|--|--|
| Crowland Primary School | 95% | 53% | 80% | 88% | 12% |
| Stamford Hill Primary School | 92% | 51% | 70% | 75% | 25% |
| Tiverton Primary School | 95% | 57% | 77% | 87% | 13% |
| PA7 Total | 94% | 54% | 76% | 85% | 15% |

Completed building developments in PA 7

There has been one major housing development completed since 1996.

| Site | Number of units | Child yield calculation |
|--|------------------------|--------------------------------|
| Woodberry Down Baptist Church, Varity Road. | 24 | 2 |

Proposed housing developments in PA 7

There are 2 major housing developments currently being considered and 3 major housing developments granted by the planners

| Site | Decision | Number of units | Child yield calculation |
|---|-----------------|------------------------|--------------------------------|
| 318-320 High Road N15 | Pending | 15 | 6 |
| 16-52 High Road N15 | Pending | 18 | 11 |
| Arena Estate off Finsbury Park Avenue N4 | Granted | 28 | 13 |
| Corner of Lemsford Close & Grovelands Road N15 | Granted | 58 | 25 |
| Omega Works Hermitage Road N4 1NA | Granted | 66 | 10 |
| Total | | 185 | 65 |

- 64 A major development of 4000 units of affordable housing is planned over in the Hackney border on the Woodbury Down estate by Seven Sisters road. However, Hackney council propose a new 3fe school to serve this new estate.

Children's Centre development.

- 65 Plevna Children's centre (will be in new purpose built building on the edge of Paignton Park from spring 07). This is a phase one centre and offers the full range of services.
- 66 Continuation of Partnership work with LB Hackney to develop a service plan for the Lubavitch Children's Centre in Stamford Hill to support the Orthodox Jewish Charedi community living in Seven Sisters.

Conclusion

- 67 There is currently falling reception rolls within this planning area. There are very few Haringey based major housing proposals or completed developments that will have an impact upon the demand for school places. This area has low mobility during key stage 1, but high mobility during key stage 2.

- 68 There is the possibility that school places could be taken in coming years by residents of the large Woodbury Down development over the Hackney border. However as part of this development a new 3fe primary school will be built on the estate for 2009 to serve the expected demand of increasing pupil numbers. Hackney are not depending on Haringey schools to meet this expected demand.
- 69 The low number of 1st place applications to Crowlands is probably a result of the fire in 2005. It is expected that applications will increase in the future.
- 70 This is one of the planning areas with a large amount of surplus capacity, coupled with falling rolls and Hackneys school development plans, we suggest a detailed review of demand and availability of school places in partnership with schools, is conducted during the 06/07 school year to ensure there are sufficient places to meet demand.

Planning area 8

71 This planning area incorporates Tottenham Green ward.

Table 8.1: Schools, PANs, reception numbers and unfilled reception places in planning area 8

| School | Planned admission number 2005 | Current Reception Nos. | Current Unfilled reception places |
|---------------|-------------------------------|------------------------|-----------------------------------|
| Earlsmead | 60 | 55 | 5 |
| Welbourne | 60 | 44 | 16 |
| Totals | 120 | 99 | 21 |

Table 8.2 GLA projections for planning area 8

| Year | Number of Births for the equivalent school year | GLA 4 year old roll projection | Planned admission number | Total number 1 st place preferences |
|---------|---|--------------------------------|--------------------------|--|
| 2001/2 | | 124 | 120 | - |
| 2002/3 | 225 | 110 | 120 | 102 |
| 2003/4 | 250 | 111 | 120 | 126 |
| 2004/5 | 251 | 110 | 120 | 113 |
| 2005/6 | 246 | 99 | 120 | 102 |
| 2006/7 | 288 | 103 | 120 | 90 |
| 2007/8 | 257 | 106 | 120 | |
| 2008/9 | | 107 | 120 | |
| 2009/10 | | 109 | 120 | |
| 2010/11 | | 111 | 120 | |
| 2011/12 | | 112 | 120 | |

Table 8.3: First place preference information

| School | 2002 | 2003 | 2004 | 2005 | 2006 |
|--------------|------------|------------|------------|------------|-----------|
| Earlsmead | 49 | 75 | 63 | 47 | 35 |
| Welbourne | 53 | 51 | 50 | 55 | 55 |
| Total | 102 | 126 | 113 | 102 | 90 |

Table 8.4: Total number of pupils on roll (reception to year 6)

| School | 2002 | 2003 | 2004 | 2005 | 2006 |
|----------------------------|--------------|--------------|---------------|--------------|---------------|
| Earlsmead | 398 | 398 | 396 | 392 | 386 |
| Welbourne | 367 | 384 | 358 | 366 | 370 |
| Total | 765 | 782 | 754 | 758 | 753 |
| Total Capacity | 840 | 840 | 840 | 840 | 840 |
| Percentage of total | 8.93% | 6.91% | 10.24% | 9.76% | 10.36% |
| Surplus capacity | | | | | |

Table 8.5: Total School Roll trends by year group

| Year | Rolls PA 8 | | | | | | | total |
|------|------------|--------|--------|--------|--------|--------|--------|-------|
| | Reception | Year 1 | Year 2 | Year 3 | Year 4 | Year 5 | Year 6 | |
| 1997 | 108 | 94 | 94 | 81 | 87 | 77 | 80 | 621 |
| 1998 | 111 | 106 | 86 | 98 | 69 | 85 | 70 | 625 |
| 1999 | 116 | 105 | 108 | 76 | 101 | 73 | 80 | 659 |
| 2000 | 116 | 114 | 112 | 112 | 71 | 105 | 85 | 715 |
| 2001 | 119 | 117 | 114 | 116 | 109 | 80 | 105 | 760 |
| 2002 | 124 | 115 | 110 | 109 | 116 | 115 | 76 | 765 |
| 2003 | 110 | 119 | 119 | 113 | 108 | 108 | 105 | 782 |
| 2004 | 111 | 108 | 115 | 112 | 107 | 102 | 99 | 754 |
| 2005 | 110 | 114 | 110 | 108 | 115 | 99 | 102 | 758 |
| 2006 | 99 | 115 | 111 | 113 | 109 | 107 | 99 | 753 |

Table 8.6: 2005 Mobility

| School | KS1 | KS2 | Total |
|--------------|------------|------------|------------|
| Earlsmead | 8% | 37% | 27% |
| Welbourne | 17% | 42% | 33% |
| Total | 12% | 44% | 32% |

Table 8.7: Summary of distances pupils live from their school

| School Name | % of pupils postcodes mapped | % of pupils living between 0-0.3 miles from the school | % of pupils living between 0-0.6 miles from the school | % of pupils living between 0-1 miles from the school | % of pupils living 1 miles or more from the school |
|--------------------------|------------------------------|--|--|--|--|
| Earlsmead Primary School | 95% | 50% | 72% | 83% | 17% |
| Welbourne Primary School | 95% | 51% | 68% | 84% | 16% |
| PA8 Total | 95% | 51% | 70% | 84% | 16% |

Completed building developments in PA 8

There have been 5 major housing developments completed since 1996.

| Site | Number of units | Child yield calculation |
|---|---------------------------------|-------------------------|
| Former Goods Yard Site, High Road | 246 (majority are studio flats) | 6 |
| Jewish Home And Hospital, 295 High Road | 63 | 34 |
| Jewish Home And Hospital, 295 High Road | 16 | 11 |
| Former Stone Works, Dorset Road | 12 | 9 |
| Mountford House, Tottenham Green East | 25 | 14 |
| Total | 362 | 74 |

Proposed housing developments in PA 8

There is 1 major housing development currently being considered and 5 major housing developments granted by the planners

| Site | Decision | Number of units | of Child calculation | yield |
|--|----------|-----------------|----------------------|-------|
| 20-22 Avenue Road N15 | Pending | 12 | 2 | |
| 1 & 2 Tottenham Green East & 280-288 High Road N17 | Granted | 22 | 4 | |
| 280-296 High Road & 1-3 Tottenham Gr. East N15 4DQ | Granted | 30 | 12 | |
| 344 High Road N15 4BN | Granted | 41 | 15 | |
| 278 High Road N15 4AJ | Granted | 14 | 8 | |
| Saltram Close Housing Estate N15 | Granted | 44 | 33 | |
| Total | | 163 | 74 | |

72 A planning application for Hale village will be submitted to the planning department. The location of the development is around Tottenham Hale station. There are 1244 units proposed within the Hale Village development, yielding an estimated 608 children (see PA 9). This application is only for the GLS site. A separate application will be submitted for the current Hale Wharf site. It is anticipated that the planning application will be for approximately 500 units.

Children's Centre development.

73 Welbourne primary school will have a main children's centre to support part of the Tottenham Green and part of the Bruce Grove communities. This will be in Phase 2.

74 Earlsmead primary school will have a main children's centre to support part of the Tottenham Hale and part of the Tottenham Green communities. This will be in Phase 2.

Conclusion

75 The school roll projections provided to us from the GLA, do not take account of the locality of large developments, and are based predominantly on PLASC history and birth information. Currently the birth rate and reception class projections remain steady, along with the reception applications. However we expect these trends to raise once Hale village becomes populated.

76 As noted above a planning application has been submitted to the council for the development of Hale village. There are vacant spaces in local schools and expect these to be taken up by children from the development. However, due to the size of the development we are currently in discussion with the developer over future primary school place provision in the area.

77 The situation for school places will be kept under annual review.

Planning area 9

78 This planning area incorporates Tottenham Hale ward.

Table 9.1: Schools, PANs, reception numbers and unfilled reception places in planning area 9

| School | Planned admission number 2005 | Current Reception Nos. | Current Unfilled reception places |
|------------------------|--------------------------------------|-------------------------------|--|
| Coleraine Park Primary | 60 | 58 | 2 |
| Ferry Lane Primary | 30 | 29 | 1 |
| Mulberry Primary | 90 | 90 | 0 |
| The Green CE Primary | 30 | 26 | 4 |
| Totals | 210 | 203 | 7 |

Table 9.2 GLA projections for planning area 9

| Year | Number of Births for the equivalent school year | GLA 4 year old roll projection | Planned admission number | Total number 1st place preferences |
|-------------|--|---------------------------------------|---------------------------------|--|
| 2001/2 | | 209 | 210 | |
| 2002/3 | 253 | 196 | 210 | 195 |
| 2003/4 | 257 | 198 | 210 | 207 |
| 2004/5 | 266 | 197 | 210 | 201 |
| 2005/6 | 245 | 203 | 210 | 186 |
| 2006/7 | 249 | 193 | 210 | 151 |
| 2007/8 | 261 | 202 | 210 | |
| 2008/9 | | 205 | 210 | |
| 2009/10 | | 206 | 210 | |
| 2010/11 | | 207 | 210 | |
| 2011/12 | | 210 | 210 | |

Table 9.3: First place preference information

| School | 2002 | 2003 | 2004 | 2005 | 2006 |
|------------------------|-------------|-------------|-------------|-------------|-------------|
| Coleraine Park Primary | 44 | 51 | 66 | 46 | 33 |
| Ferry Lane Primary | 38 | 38 | 31 | 27 | 11 |
| Mulberry Primary | 73 | 88 | 74 | 73 | 82 |
| The Green CE Primary | 40 | 30 | 30 | 40 | 25 |
| Total | 195 | 207 | 201 | 186 | 151 |

Table 9.4: Total number of pupils on roll (reception to year 6)

| Year | Rolls PA 9 | | | | | | | total |
|------|------------|--------|--------|--------|--------|--------|--------|-------|
| | Reception | Year 1 | Year 2 | Year 3 | Year 4 | Year 5 | Year 6 | |
| 1997 | 194 | 198 | 189 | 203 | 197 | 196 | 157 | 1334 |
| 1998 | 199 | 205 | 197 | 187 | 198 | 203 | 193 | 1382 |
| 1999 | 190 | 209 | 208 | 199 | 197 | 195 | 188 | 1386 |
| 2000 | 195 | 204 | 211 | 209 | 197 | 197 | 184 | 1397 |
| 2001 | 196 | 210 | 208 | 217 | 205 | 197 | 193 | 1426 |
| 2002 | 209 | 204 | 207 | 209 | 211 | 198 | 190 | 1428 |
| 2003 | 196 | 211 | 201 | 205 | 195 | 204 | 204 | 1416 |
| 2004 | 198 | 210 | 207 | 202 | 203 | 194 | 200 | 1414 |
| 2005 | 197 | 194 | 206 | 209 | 191 | 200 | 198 | 1395 |
| 2006 | 203 | 195 | 189 | 211 | 209 | 193 | 194 | 1394 |

Table 9.5: Total School Roll trends by year group

| School | 2002 | 2003 | 2004 | 2005 | 2006 |
|---|--------------|--------------|--------------|--------------|--------------|
| Coleraine Park Primary | 415 | 414 | 404 | 407 | 401 |
| Ferry Lane Primary | 207 | 195 | 197 | 199 | 193 |
| Mulberry Primary | 604 | 606 | 613 | 585 | 607 |
| The Green CE Primary | 202 | 201 | 200 | 204 | 193 |
| Total | 1428 | 1416 | 1414 | 1395 | 1394 |
| Total Capacity | 1470 | 1470 | 1470 | 1470 | 1470 |
| Percentage of total Surplus capacity | 2.86% | 3.67% | 3.81% | 5.10% | 5.17% |

Table 9.6: 2005 Mobility

| School | KS1 | KS2 | Total |
|------------------------|------------|------------|------------|
| Coleraine Park Primary | 12% | 38% | 30% |
| Ferry Lane Primary | 3% | 25% | 18% |
| Mulberry Primary | 14% | 38% | 29% |
| The Green CE Primary | 7% | 21% | 16% |
| Total | 11% | 35% | 27% |

Table 9.7: Summary of distances pupils live from their school

| School Name | % of pupils mapped | % of pupils living between 0-0.3 miles from the school | % of pupils living between 0-0.6 miles from the school | % of pupils living between 0-1 miles from the school | % of pupils living 1 miles or more from the school |
|-------------------------------|--------------------|--|--|--|--|
| Coleraine Park Primary School | 97% | 53% | 77% | 94% | 6% |
| Ferry Lane Primary School | 99% | 69% | 73% | 90% | 10% |
| Mulberry Primary School | 97% | 63% | 83% | 90% | 10% |
| PA9 Total | 97% | 61% | 79% | 91% | 9% |

Completed building developments in PA 9

There have been 4 major housing developments completed since 1996.

| Site | Number of units | Child yield calculation |
|---------------------------------------|-----------------|-------------------------|
| 636-638 High Road | 26 | 7 |
| Former Dairycrest Depot, Hampden Lane | 28 | 13 |
| 178 Landsdowne Road | 26 | 11 |
| Former Wisepart Ltd. Factory Lane | 14 | 2 |
| Total | 94 | 33 |

Proposed housing developments in PA 9

Four major housing developments have been granted in PA9. Together there is a combined unit total of 104. The estimate for the child yield is between 9-24.

Two housing developments are pending agreement by the planning department. There is a combined unit total of 76. The estimate for the child yield is between 4-18.

There is 1 major housing development currently being considered and 6 major housing developments granted by the planners

| Site | Decision | Number of units | Child yield calculation |
|--|----------|-------------------|-------------------------|
| 148-156 High Road N15 | Pending | 27 | 6 |
| Former Goods Yard Site adjacent to S. Tottenham Station, High Road N15 | Granted | 246 (225 bedsits) | 7 |
| 612 High Road N17 | Granted | 18 | 4 |
| 658 High Road N17 | Granted | 13 | 13 |
| 22-70 Dowsett Road N17 9DD | Granted | 19 | 8 |
| 143 Broad Lane N15 4QX | Granted | 54 | 10 |
| Silver Industrial Estate. Reform Row N17 | Granted | 25 | 10 |
| Total | | 402 | 58 |

- 79 A planning application for Hale village will be submitted to the planning department. The located of the development is around Tottenham Hale station. There are 1244 units proposed within the Hale Village development, yielding an estimated 608 children. This application is only for the GLS site. A separate application will be submitted for the current Hale Wharf site. It is anticipated that the planning application will be for approximately 500 units.

Children's Centre development.

- 80 Pembury Children's centre (formerly known as Pembury House EEC & Nursery School). This is a phase one centre and offers the full range of services.
- 81 The Green Cof E school will provide some children centre services and link into Welbourne Primary to support the South Tottenham hale community. This will be in Phase 2.
- 82 Ferry Lane school will provide some children centre services and link into Welbourne Primary to support the South Tottenham hale community. This will be in Phase 2.
- 83 Mulberry primary school will provide some children centre services and link into Pembury Children's centre to support the North Tottenham hale community. This will be in Phase 2.
- 84 Coleraine Primary school will provide some children centre services and link into Pembury Children's centre to support the North Tottenham hale community. This will be in Phase 2.

Conclusion

- 85 The school roll projections provided to us from the GLA, do not take account of the locality of large developments, and are based predominantly on PLASC history and birth information. Currently the birth rate and reception class projections remain steady, along with the reception applications. However we expect these trends to raise once Hale village becomes populated.
- 86 As noted above a planning application has been submitted to the council for the development of Hale village. There are vacant spaces in local schools and expect these to be taken up by children from the development. However, due to the size of the development we are currently in discussion with the developer over future primary school place provision in the area.
- 87 The situation for school places will be kept under annual review.

Planning area 10

88 This planning area incorporates Northumberland Park ward.

Table 10.1: Schools, PANs, reception numbers and unfilled reception places in planning area 10

| School | Planned admission number 2005 | Current Reception Nos. | Current Unfilled reception places |
|------------------------------------|-------------------------------|------------------------|-----------------------------------|
| Lancasterian Primary | 58 | 55 | 3 |
| Lea Valley Primary | 60 | 60 | 0 |
| St Francis de Sales RC Infants | 90 | 90 | 0 |
| St Francis de Sales RC Juniors | | | |
| St Paul's & All Hallows CE Infants | 60 | 60 | 0 |
| St Paul's & All Hallows CE Juniors | | | |
| Totals | 268 | 265 | 3 |

Table 10.2 GLA projections for planning area 10

| Year | Number of Births for the equivalent school year | GLA 4 year old roll projection | Planned admission number | Total number 1 st place preferences |
|---------|---|--------------------------------|--------------------------|--|
| 2001/2 | | 271 | 268 | - |
| 2002/3 | 204 | 266 | 268 | 339 |
| 2003/4 | 193 | 286 | 289 | 318 |
| 2004/5 | 252 | 264 | 268 | 304 |
| 2005/6 | 234 | 265 | 268 | 307 |
| 2006/7 | 263 | 306 | 268 | 281 |
| 2007/8 | 279 | 295 | 268 | |
| 2008/9 | | 302 | 268 | |
| 2009/10 | | 305 | 268 | |
| 2010/11 | | 309 | 268 | |
| 2011/12 | | 314 | 268 | |

Table 10.3: First place preference

| School | 2002 | 2003 | 2004 | 2005 | 2006 |
|------------------------------------|------------|------------|------------|------------|------------|
| Lancasterian Primary | 78 | 72 | 57 | 56 | 47 |
| Lea Valley Primary | 81 | 74 | 75 | 79 | 77 |
| St Francis de Sales RC Infants | 103 | 95 | 95 | 95 | 94 |
| St Francis de Sales RC Juniors | | | | | |
| St Paul's & All Hallows CE Infants | 77 | 77 | 77 | 77 | 63 |
| St Paul's & All Hallows CE Juniors | | | | | |
| Total | 339 | 318 | 304 | 307 | 281 |

Table 10.4: Total number of pupils on roll (reception to year 6)

| School | 2002 | 2003 | 2004 | 2005 | 2006 |
|---|--------------|--------------|--------------|--------------|--------------|
| Lancasterian Primary* | 434 | 431 | 419 | 415 | 416 |
| Lea Valley Primary | 452 | 423 | 426 | 425 | 424 |
| St Francis de Sales RC Infants | 270 | 266 | 268 | 264 | 269 |
| St Francis de Sales RC Juniors*** | | 301 | 326 | 350 | 356 |
| St Paul's & All Hallows CE Infants | 180 | 180 | 180 | 179 | 180 |
| St Paul's & All Hallows CE Juniors | 230 | 233 | 227 | 232 | 236 |
| Total | 1834 | 1834 | 1846 | 1865 | 1881 |
| Total Capacity | 1858 | 1858 | 1888 | 1918 | 1918 |
| Percentage of total surplus capacity | 1.29% | 1.29% | 2.22% | 2.76% | 1.93% |

* Lancasterian has budge years of 21 in year 2 & 5

** Lea Valley last took a budge year of 30 in Sep 95

***St Francis de Sales RC expanded in sep 1999 to take 90 pupils.

Table 10.5: Total School Roll trends by year group

| Year | Rolls PA 10 | | | | | | | Total |
|------|-------------|--------|--------|--------|--------|--------|--------|-------|
| | Reception | Year 1 | Year 2 | Year 3 | Year 4 | Year 5 | Year 6 | |
| 1997 | 260 | 264 | 240 | 233 | 230 | 234 | 206 | 1667 |
| 1998 | 234 | 262 | 262 | 235 | 238 | 233 | 231 | 1695 |
| 1999 | 262 | 237 | 262 | 264 | 237 | 242 | 232 | 1736 |
| 2000 | 261 | 267 | 232 | 261 | 260 | 232 | 235 | 1748 |
| 2001 | 293 | 265 | 262 | 237 | 263 | 263 | 232 | 1815 |
| 2002 | 271 | 290 | 264 | 262 | 238 | 248 | 261 | 1834 |
| 2003 | 266 | 273 | 287 | 266 | 258 | 236 | 248 | 1834 |
| 2004 | 286 | 269 | 269 | 287 | 262 | 251 | 222 | 1846 |
| 2005 | 264 | 274 | 263 | 267 | 285 | 262 | 250 | 1865 |
| 2006 | 265 | 266 | 278 | 266 | 265 | 283 | 258 | 1881 |

Table 10.6: 2005 Mobility

| School | KS1 | KS2 | Total |
|------------------------------------|-----------|------------|------------|
| Lancasterian Primary | 5% | 20% | 15% |
| Lea Valley Primary | 13% | 28% | 23% |
| St Francis de Sales RC Infants | 2% | | 2% |
| St Francis de Sales RC Juniors | | 6% | 6% |
| St Paul's & All Hallows CE Infants | 10% | | 10% |
| St Paul's & All Hallows CE Juniors | | 8% | 8% |
| Total | 7% | 15% | 12% |

Table 10.7: Summary of distances pupils live from their school

| School Name | % of pupils postcodes mapped | % of pupils living between 0-0.3 miles from the school | % of pupils living between 0-0.6 miles from the school | % of pupils living between 0-1 miles from the school | % of pupils living 1 miles or more from the school |
|-----------------------------|------------------------------|--|--|--|--|
| Lancasterian Primary School | 94% | 52% | 84% | 92% | 8% |
| Lea Valley Primary School | 96% | 69% | 82% | 85% | 15% |
| PA10 Total | 95% | 61% | 83% | 89% | 11% |

Completed building developments in PA 10

There have been 3 major housing developments completed since 1996.

| Site | Number of units | Child yield calculation |
|---------------------------|-----------------|-------------------------|
| Northumberland Park House | 20 | 9 |
| Blaydon Close | 15 | 5 |
| 1-49 Meridian Walk | 74 | 54 |
| Total | 109 | 68 |

Proposed housing developments in PA 10

There is 1 major housing development currently being considered and 6 major housing developments granted by the planners

| Site | Decision | Number of units | Child yield calculation |
|--|----------|-----------------|-------------------------|
| 658-660 High Road N17 | Pending | 34 | 11 |
| 62-70 Northumberland Park N17 | Granted | 14 | 6 |
| Blaydon Close, Northumberland Park N17 | Granted | 15 | 5 |
| Northumberland Park House, Northumberland Park | Granted | 20 | 10 |
| 6-8 James Place N17 8NR | Granted | 12 | 5 |
| Three Compasses, Queen Street N17 8HU | Granted | 23 | 10 |
| Harpers Yard, Ruskin Road N17 8QQ | Granted | 16 | 5 |
| Total | | 134 | 52 |

89 The area around White Hart Lane football stadium has been identified in the Mayors Draft Spatial Strategy as a potential regeneration area. The area has the potential capacity to build a further 400-600 units.

Children's Centre development.

90 No current plans for this Planning Area.

Conclusion

- 91 The schools in this planning area are either full or very close to capacity in their reception years with a total surplus of 3 reception places for the whole area. The projections for 4 year olds show a continuing upward trend. This is supported by increasing birth rates and a few housing developments in Haringey and Enfield. This area is characterized by low mobility at both key stages, steady growth in school population and an increasing demand for school places.
- 92 If the White Hart Lane football stadium regeneration proposals are also taken forward, then there will be a need to create additional school places in this area.
- 93 If there is a need to create additional places then the PAN of Devonshire Hill primary school (in PA11) could be increased. However this should only be considered once demand has been demonstrated.
- 94 St Pauls & All Hallows infant and junior schools have consulted on and agreed that both schools should be merged by creating a hard federation.
- 95 The situation for school places will be kept under annual review.

Planning area 11

96 This planning area incorporates White Hart Lane ward.

Table 11.1: Schools, PANs, reception numbers and unfilled reception places in planning area 11

| School | Planned admission number 2005 | Current Reception Nos. | Current Unfilled reception places |
|------------------|-------------------------------|------------------------|-----------------------------------|
| Devonshire Hill* | 75 | 57 | 18 |
| Risley Avenue | 90 | 79 | 11 |
| Totals | 165 | 136 | 29 |

*60 from Sep 2007

Table 11.2 GLA projections for planning area 11

| Year | Number of Births for the equivalent school year | GLA 4 year old roll projection | Planned admission number | Total number 1 st place preferences |
|---------|---|--------------------------------|--------------------------|--|
| 2001/2 | | 154 | 165 | |
| 2002/3 | 181 | 149 | 165 | 153 |
| 2003/4 | 208 | 136 | 165 | 145 |
| 2004/5 | 190 | 135 | 165 | 145 |
| 2005/6 | 234 | 136 | 165 | 131 |
| 2006/7 | 205 | 127 | 165 | 119 |
| 2007/8 | 193 | 130 | 150 | |
| 2008/9 | | 132 | 150 | |
| 2009/10 | | 133 | 150 | |
| 2010/11 | | 135 | 150 | |
| 2011/12 | | 138 | 150 | |

Table 11.3: First place preference information

| School | 2002 | 2003 | 2004 | 2005 | 2006 |
|-----------------|------------|------------|------------|------------|------------|
| Devonshire Hill | 65 | 58 | 62 | 59 | 46 |
| Risley Avenue | 88 | 87 | 83 | 72 | 73 |
| Total | 153 | 145 | 145 | 131 | 119 |

Table 11.4: Total number of pupils on roll (reception to year 6)

| School | 2002 | 2003 | 2004 | 2005 | 2006 |
|---|---------------|--------------|---------------|---------------|---------------|
| Devonshire Hill | 414 | 424 | 409 | 408 | 397 |
| Risley Avenue | 620 | 622 | 620 | 610 | 604 |
| Total | 1034 | 1046 | 1029 | 1018 | 1001 |
| Total Capacity | 1155 | 1155 | 1155 | 1155 | 1155 |
| Percentage of total Surplus capacity | 10.48% | 9.44% | 10.90% | 11.86% | 13.33% |

Table 11.5: Total School Roll trends by year group

| Year | Rolls PA 11 | | | | | | | total |
|------|-------------|--------|--------|--------|--------|--------|--------|-------|
| | Reception | Year 1 | Year 2 | Year 3 | Year 4 | Year 5 | Year 6 | |
| 1997 | 157 | 141 | 147 | 143 | 128 | 153 | 119 | 988 |
| 1998 | 140 | 147 | 152 | 148 | 151 | 148 | 132 | 1018 |
| 1999 | 141 | 139 | 161 | 147 | 155 | 151 | 146 | 1040 |
| 2000 | 135 | 134 | 140 | 153 | 141 | 150 | 158 | 1011 |
| 2001 | 151 | 139 | 141 | 147 | 147 | 139 | 148 | 1012 |
| 2002 | 154 | 146 | 148 | 146 | 144 | 145 | 151 | 1034 |
| 2003 | 149 | 156 | 149 | 148 | 151 | 146 | 147 | 1046 |
| 2004 | 136 | 152 | 152 | 149 | 147 | 147 | 149 | 1032 |
| 2005 | 135 | 143 | 149 | 152 | 147 | 145 | 147 | 1018 |
| 2006 | 136 | 141 | 140 | 147 | 151 | 144 | 142 | 1001 |

Table 11.6: 2005 Mobility

| School | KS1 | KS2 | Total |
|-----------------|-----------|------------|------------|
| Devonshire Hill | 9% | 32% | 24% |
| Risley Avenue | 8% | 34% | 25% |
| Total | 8% | 32% | 25% |

Table 11.7: Summary of distances pupils live from their school

| School Name | % of pupils postcodes mapped | % of pupils living between 0-0.3 miles from the school | % of pupils living between 0-0.6 miles from the school | % of pupils living between 0-1 miles from the school | % of pupils living 1 miles or more from the school |
|--------------------------------|------------------------------|--|--|--|--|
| Devonshire Hill Primary School | 97% | 33% | 77% | 89% | 11% |
| Risley Avenue Primary School | 97% | 37% | 81% | 93% | 7% |
| PA11 Total | 97% | 36% | 80% | 92% | 8% |

Completed building developments in PA 11

86. There have been two major housing developments completed since 1996.

| Site | Number of units | Child yield calculation |
|--|-----------------|-------------------------|
| White Hart P.H, Devonshire Hill Lane | 24 | 18 |
| Falconer Court, Compton Crescent N17 7SU | 21 | 8 |
| Land North Off Allington Avenue | 16 | 5 |
| Total | 61 | 31 |

Proposed housing developments in PA 11

There is 1 major housing development currently being considered and 2 major housing developments granted by the planners

| Site | Decision | Number of units | Child yield calculation |
|--|----------|-----------------|-------------------------|
| 315 The Roundway N17 7AB | Pending | 53 | 27 |
| Middx University White Hart Lane N17 8HR | Granted | 81 | 33 |
| Middlesex University White Hart Lane N17 | Granted | 123 | 51 |
| Total | | 257 | 111 |

97 On the Enfield border the Bull Lane development is currently going through the final phases of planning. The expectation is the development will be approved. The site is 4 acres and one third of this land will be developed for family housing.

Children's Centre development.

98 Rowland Hill children's centre (formerly known as Rowland Hill EEC & Nursery School). This is a phase one centre and offers the full range of services.

Conclusion

99 The birth rate and reception class projections remain steady. Reception applications have declined slightly but this could be a result of co-ordinated admissions. This area has low mobility during key stage 1, but high mobility during key stage 2. The school population has fluctuated over the past 10 years, and are currently at the lowest since 1997.

100 Devonshire Hill primary school has in effect operated as a 2fe for a number of years; in agreement with the school we are formally reducing the PAN to 60 from 75.

101 There are relatively few major housing developments that would affect the current demand for places. The impact of the Bull Lane development in Enfield and regeneration proposals along the Tottenham corridor may result in the need to create additional school places in Devonshire Hill primary school. When there is the demand to increase the school to a 3fe then this option should be considered.

102 The situation for school places will be kept under annual review.

Planning area 12

103 This planning area incorporates Bruce Grove ward and part of West Green ward.

Table 12.1: Schools, PANs, reception numbers and unfilled reception places in planning area 12

| School | Planned admission number 2005 | Current Reception Nos. | Current Unfilled reception places |
|----------------------------|--------------------------------------|-------------------------------|--|
| Belmont Infant | 56 | 55 | 1 |
| Belmont Junior | | | |
| Broadwater Farm Primary* | 81 | 58 | 23 |
| Bruce Grove Primary School | 60 | 53 | 7 |
| Downhills Primary | 60 | 57 | 3 |
| Totals | 257 | 223 | 34 |

Reducing PAN to 60 for September 08 subject to executive agreement.

Table 12.2 GLA projections for planning area 12

| Year | Number of Births for the equivalent school year | GLA 4 year old roll projection | Planned admission number | Total number 1st place preferences |
|-------------|--|---------------------------------------|---------------------------------|--|
| 2001/2 | | 249 | 257 | - |
| 2002/3 | 246 | 246 | 257 | 259 |
| 2003/4 | 248 | 249 | 257 | 276 |
| 2004/5 | 234 | 234 | 257 | 256 |
| 2005/6 | 258 | 223 | 257 | 213 |
| 2006/7 | 254 | 210 | 257 | 229 |
| 2007/8 | 274 | 226 | 257 | |
| 2008/9 | | 231 | 236 | |
| 2009/10 | | 233 | 236 | |
| 2010/11 | | 234 | 236 | |
| 2011/12 | | 235 | 236 | |

Table 12.3: First place preference information

| School | 2002 | 2003 | 2004 | 2005 | 2006 |
|----------------------------|-------------|-------------|-------------|-------------|-------------|
| Belmont Infant | 57 | 65 | 71 | 70 | 66 |
| Belmont Junior | | | | | |
| Broadwater Farm Primary | 72 | 66 | 52 | 32 | 57 |
| Bruce Grove Primary School | 72 | 70 | 67 | 58 | 46 |
| Downhills Primary | 58 | 75 | 66 | 53 | 60 |
| Total | 259 | 276 | 256 | 213 | 229 |

Table 12.4: Total number of pupils on roll (reception to year 6)

| School | 2002 | 2003 | 2004 | 2005 | 2006 |
|---|--------------|--------------|--------------|-------------|--------------|
| Belmont Infant | 164 | 162 | 168 | 166 | 168 |
| Belmont Junior | 223 | 207 | 203 | 204 | 218 |
| Broadwater Farm Primary* | 462 | 475 | 495 | 481 | 450 |
| Bruce Grove Primary School | 412 | 416 | 410 | 416 | 400 |
| Downhills Primary | 401 | 392 | 391 | 404 | 397 |
| Total | 1662 | 1652 | 1667 | 1671 | 1633 |
| Percentage of total Surplus capacity | 1736 | 1757 | 1778 | 1799 | 1799 |
| Total Capacity | 4.26% | 5.98% | 6.24% | 7.12 | 9.23% |

*Broadwater Farm was expanded in sep 1998 to take 81 pupils.

Table 12.5: Total School Roll trends by year group

| Year | Rolls PA 12 | | | | | | | total |
|------|-------------|--------|--------|--------|--------|--------|--------|-------|
| | Reception | Year 1 | Year 2 | Year 3 | Year 4 | Year 5 | Year 6 | |
| 1997 | 249 | 234 | 261 | 224 | 256 | 217 | 225 | 1666 |
| 1998 | 251 | 253 | 215 | 234 | 230 | 253 | 221 | 1657 |
| 1999 | 243 | 257 | 240 | 233 | 232 | 229 | 256 | 1690 |
| 2000 | 243 | 243 | 247 | 226 | 237 | 236 | 221 | 1653 |
| 2001 | 245 | 246 | 239 | 237 | 226 | 228 | 226 | 1647 |
| 2002 | 249 | 255 | 240 | 230 | 231 | 229 | 228 | 1662 |
| 2003 | 246 | 243 | 248 | 239 | 219 | 220 | 237 | 1652 |
| 2004 | 248 | 253 | 244 | 239 | 238 | 220 | 225 | 1667 |
| 2005 | 234 | 256 | 250 | 241 | 235 | 236 | 219 | 1671 |
| 2006 | 223 | 218 | 251 | 240 | 235 | 230 | 236 | 1633 |

Table 12.6: 2005 Mobility

| School | KS1 | KS2 | Total |
|----------------------------|------------|------------|------------|
| Belmont Infant | 8% | | 8% |
| Belmont Junior | | 19% | 19% |
| Broadwater Farm Primary | 11% | 26% | 20% |
| Bruce Grove Primary School | 19% | 43% | 35% |
| Downhills Primary | 16% | 49% | 38% |
| Total | 13% | 42% | 31% |

Table 12.7: Summary of distances pupils live from their school

| School Name | % of pupils postcodes mapped | % of pupils living between 0-0.3 miles from the school | % of pupils living between 0-0.6 miles from the school | % of pupils living between 0-1 miles from the school | % of pupils living 1 miles or more from the school |
|--------------------------------|------------------------------|--|--|--|--|
| Belmont Infant School | 96% | 56% | 88% | 93% | 7% |
| Belmont Junior School | 93% | 49% | 82% | 91% | 9% |
| Broadwater Farm Primary School | 99% | 75% | 89% | 95% | 5% |
| Bruce Grove Primary School | 93% | 56% | 79% | 90% | 10% |
| Downhills Primary School | 95% | 45% | 71% | 87% | 13% |
| PA12 Total | 95% | 58% | 81% | 91% | 9% |

Completed building developments in PA12

There have been 8 major housing developments completed since 1996.

| Site | Number of units | Child yield calculation |
|---|-----------------|-------------------------|
| 6 Bruce Grove | 19 | 14 |
| 3-25 Pembury Road | 19 | 9 |
| 579d High Road | 13 | 6 |
| Former High cross upper school, High Road | 28 | 8 |
| Pembury House, 593-599 high road | 13 | 3 |
| Milton Road depot, 70 Milton Road | 67 | 42 |
| Dagmar Arms Cornwall Road | 26 | 9 |
| Tangmere house Willan Road | 12 | 5 |
| Total | 197 | 96 |

Proposed housing developments in PA 12

There are 4 major housing developments granted by the planners

| Site | Decision | Number of units | Child yield calculation |
|-----------------------------|----------|-----------------|-------------------------|
| 472-480 West Green Road N15 | Granted | 22 | 11 |
| 415-419 High Road N17 | Granted | 52 | 5 |
| 658 High Road N17 | Granted | 13 | 9 |
| 339 Lordship Lane N17 6AZ | Granted | 14 | 5 |
| Total | | 101 | 30 |

Children's Centre development.

- 104 Broadwater Farm Children's centre opened in September 2005. This centre offers the full range of services.
- 105 Sefkat Nursery will have a main children's centre to support parts of west green and Bruce grove communities. This will be in Phase 2.
- 106 Bruce Grove primary school will provide some children centre services and link into Sefkat Nursery. This will be in Phase 2.

Conclusion

- 107 The birth rate and reception class projections remain steady. The total number of reception applications have also remained steady. There is low mobility during key stage 1, but very high mobility during key stage 2. The school population has remand stable in this area. There are relatively few major housing developments and no plans that would affect the current situation.
- 108 The demand for school places in parts of this area are to some extent masked by surplus capacity in others. At the current time there is no need to increase primary school provision within this PA.
- 109 In consultation with Broadwater Farm Primary we will be reducing their PAN to 60 from 81 for September 2008. Any future increases back to 81 will be considered if there is sufficient and continued demand for the places.
- 110 The situation for school places will be kept under annual review.

Planning area 13

111 This planning area incorporates Noel Park ward.

Table 13.1: Schools, PANs, reception numbers and unfilled reception places in planning area 13

| School | Planned admission number 2005 | Current Reception Nos. | Current Unfilled reception places |
|--------------------|--------------------------------------|-------------------------------|--|
| Alexandra Primary* | 60 | 28 | 32 |
| Noel Park Primary | 81 | 69 | 12 |
| Totals | 141 | 97 | 44 |

*30 from Sep 2007

Table 13.2 GLA projections for planning area 13

| Year | Number of Births for the equivalent school year | GLA 4 year old roll projection | Planned admission number | Total number 1st place preferences |
|-------------|--|---------------------------------------|---------------------------------|--|
| 2001/2 | | 120 | 141 | - |
| 2002/3 | 75 | 75 | 141 | 69 |
| 2003/4 | 87 | 87 | 141 | 79 |
| 2004/5 | 104 | 104 | 141 | 89 |
| 2005/6 | 99 | 97 | 141 | 77 |
| 2006/7 | 79 | 76 | 141 | 56 |
| 2007/8 | 98 | 90 | 111 | |
| 2008/9 | | 93 | 111 | |
| 2009/10 | | 94 | 111 | |
| 2010/11 | | 96 | 111 | |
| 2011/12 | | 97 | 111 | |

Table 13.3: First place preference information

| School | 2002 | 2003 | 2004 | 2005 | 2006 |
|-------------------|-------------|-------------|-------------|-------------|-------------|
| Alexandra Primary | 28 | 32 | 28 | 32 | 20 |
| Noel Park Primary | 41 | 47 | 61 | 45 | 36 |
| Total | 69 | 79 | 89 | 77 | 56 |

Table 13.4: Total number of pupils on roll (reception to year 6)

| School | 2002 | 2003 | 2004 | 2005 | 2006 |
|---|---------------|---------------|---------------|---------------|---------------|
| Alexandra Primary | 227 | 216 | 205 | 181 | 192 |
| Noel Park Primary | 499 | 450 | 435 | 455 | 474 |
| Total | 726 | 666 | 640 | 636 | 666 |
| Total Capacity | 987 | 987 | 987 | 987 | 987 |
| Percentage of total Surplus capacity | 26.44% | 32.52% | 35.15% | 35.57% | 32.52% |

Table 13.5: Total School Roll trends by year group

| Year | Rolls PA 13 | | | | | | | total |
|------|-------------|--------|--------|--------|--------|--------|--------|-------|
| | Reception | Year 1 | Year 2 | Year 3 | Year 4 | Year 5 | Year 6 | |
| 1997 | 127 | 109 | 116 | 118 | 130 | 95 | 101 | 796 |
| 1998 | 113 | 121 | 106 | 101 | 107 | 127 | 91 | 766 |
| 1999 | 109 | 116 | 117 | 100 | 115 | 104 | 126 | 787 |
| 2000 | 124 | 120 | 111 | 117 | 104 | 132 | 118 | 826 |
| 2001 | 120 | 112 | 128 | 110 | 115 | 109 | 127 | 821 |
| 2002 | 120 | 100 | 104 | 100 | 104 | 105 | 93 | 726 |
| 2003 | 75 | 106 | 98 | 98 | 95 | 103 | 91 | 666 |
| 2004 | 87 | 83 | 98 | 95 | 89 | 88 | 100 | 640 |
| 2005 | 104 | 87 | 82 | 93 | 91 | 95 | 84 | 636 |
| 2006 | 97 | 110 | 91 | 90 | 95 | 88 | 95 | 666 |

Table 13.6: 2005 Mobility

| School | KS1 | KS2 | Total |
|-------------------|------------|------------|------------|
| Alexandra Primary | 13% | 43% | 34% |
| Noel Park Primary | 13% | 37% | 29% |
| Total | 13% | 42% | 32% |

Table 13.7: Summary of distances pupils live from their school

| School Name | % of pupils mapped | % of pupils living between 0-0.3 miles from the school | % of pupils living between 0-0.6 miles from the school | % of pupils living between 0-1 miles from the school | % of pupils living 1 miles or more from the school |
|--------------------------|--------------------|--|--|--|--|
| Alexandra Primary School | 96% | 27% | 62% | 77% | 23% |
| Noel Park Primary School | 96% | 59% | 75% | 86% | 14% |
| PA13 Total | 96% | 50% | 71% | 84% | 16% |

Completed building developments in PA 13

There have been 7 major housing developments completed since 1996.

| Site | Number of units | Child yield calculation |
|--|-----------------|-------------------------|
| Buller Road, Redvers Road | 17 | 8 |
| 51 Mayes Road | 18 | 5 |
| 675-679 Lordship Lane | 16 | 8 |
| Former Car Park And Building At Altair Close | 24 | 5 |
| Park Lane Health Centre, Park Lane | 24 | 14 |
| Garages Off, William Street | 14 | 9 |
| 3-11 Station Road | 10 | 1 |
| Total | 123 | 50 |

Proposed housing developments in PA 13

There are 2 major housing developments currently being considered and 4 major housing developments granted by the planners

| Site | Decision | Number of units | Child yield calculation |
|----------------------------------|----------|-----------------|-------------------------|
| 136 A, B, C High Road N22 | Pending | 14 | 3 |
| 673 Lordship Lane N22 | Pending | 18 | 9 |
| Goulding Court, Turnpike Lane N8 | Granted | 69 | 24 |
| 62-70 Northumberland Park N17 | Granted | 16 | 7 |
| 1-3 Whymark Avenue N22 6DJ | Granted | 13 | 4 |
| 761-767 High Road N17 8AH | Granted | 16 | 7 |
| Total | | 146 | 54 |

112 The Heartlands development of 1384 units on the Land between Kings Cross East coast main line, Mayes Rd & Hornsey Park Rd N8, is within this planning area. A conservative estimate would be a child yield figure of between 197 - 300

Children's Centre development.

113 Noel Park Primary is being assessed to see if the site is suitable for a children's centre and what services would be best placed there.

Conclusion

114 The birth rate and reception class projections remain steady, however the overall school population has declined in recent years. Reception applications have declined slightly but this could be a result of co-ordinated admissions. This area has low mobility during key stage 1, but very high mobility during key stage 2.

115 Alexandra Primary school has in effect operated as a 1fe for a number of years, therefore in agreement with the school we are formally reducing the PAN to 30.

116 With the Heartlands development in the centre of this planning area incorporating a new secondary school, we are recommending a detailed review of demand and availability of school places in partnership with schools, be conducted during the 06/07 school year to ensure there are sufficient places to meet current and future demand.

Planning area 14

117 This planning area incorporates Bounds Green and Woodside wards.

Table 14.1: Schools, PANs, reception numbers and unfilled reception places in planning area 14

| School | Planned admission number 2005 | Current Reception Nos. | Current Unfilled reception places |
|--------------------------------|-------------------------------|------------------------|-----------------------------------|
| Bounds Green Infants* | 90 | 71 | 19 |
| Bounds Green Juniors | | | |
| Earlham | 60 | 60 | 0 |
| Lordship Lane | 90 | 90 | 0 |
| Nightingale | 60 | 60 | 0 |
| St Martin of Porres RC Primary | 30 | 27 | 3 |
| St Michael's CE Primary N22 | 30 | 30 | 0 |
| St Paul's RC Primary | 30 | 29 | 1 |
| Totals | 390 | 367 | 23 |

* 60 from Sep 2007

Table 14.2 GLA projections for planning area 14

| Year | Number of Births for the equivalent school year | GLA 4 year old roll projection | Planned admission number | Total number 1 st place preferences |
|---------|---|--------------------------------|--------------------------|--|
| 2001/2 | | 364 | 390 | - |
| 2002/3 | 362 | 362 | 390 | 392 |
| 2003/4 | 354 | 355 | 390 | 431 |
| 2004/5 | 357 | 357 | 390 | 404 |
| 2005/6 | 337 | 367 | 390 | 405 |
| 2006/7 | 374 | 377 | 390 | 349 |
| 2007/8 | 345 | 398 | 360 | |
| 2008/9 | | 408 | 360 | |
| 2009/10 | | 414 | 360 | |
| 2010/11 | | 421 | 360 | |
| 2011/12 | | 425 | 360 | |

Table 14.3: First place preference information

| School | 2002 | 2003 | 2004 | 2005 | 2006 |
|--------------------------------|------------|------------|------------|------------|------------|
| Bounds Green Infants | 75 | 62 | 66 | 64 | 53 |
| Bounds Green Juniors | | | | | |
| Earlham | 54 | 68 | 51 | 48 | 48 |
| Lordship Lane | 81 | 74 | 75 | 102 | 88 |
| Nightingale | 81 | 93 | 78 | 57 | 59 |
| St Martin of Porres RC Primary | 36 | 36 | 36 | 36 | 54 |
| St Michael's CE Primary N22 | 36 | 70 | 70 | 70 | 24 |
| St Paul's RC Primary | 29 | 28 | 28 | 28 | 23 |
| Total | 392 | 431 | 404 | 405 | 349 |

Table 14.4: Total number of pupils on roll (reception to year 6)

| School | 2002 | 2003 | 2004 | 2005 | 2006 |
|---|---------------|--------------|--------------|--------------|--------------|
| Bounds Green Infants* | 191 | 211 | 221 | 227 | 216 |
| Bounds Green Juniors | 258 | 257 | 266 | 241 | 243 |
| Earlham | 374 | 388 | 386 | 372 | 380 |
| Lordship Lane | 590 | 605 | 604 | 621 | 623 |
| Nightingale | 418 | 406 | 397 | 394 | 403 |
| St Martin of Porres RC Primary | 201 | 202 | 204 | 203 | 203 |
| St Michael's CE Primary N22 | 200 | 204 | 197 | 202 | 197 |
| St Paul's RC Primary | 204 | 199 | 201 | 207 | 206 |
| Total | 2436 | 2475 | 2476 | 2467 | 2474 |
| Total Capacity | 2751 | 2730 | 2730 | 2730 | 2730 |
| Percentage of total Surplus capacity | 11.45% | 9.45% | 9.31% | 9.63% | 9.38% |

*Bounds green schools were expanded in Sep 1996 to take 90 pupils.

Table 14.5: Total School Roll trends by year group

| Year | Rolls PA 14 | | | | | | | total |
|-------------|--------------------|---------------|---------------|---------------|---------------|---------------|---------------|--------------|
| | Reception | Year 1 | Year 2 | Year 3 | Year 4 | Year 5 | Year 6 | |
| 1997 | 346 | 359 | 345 | 351 | 341 | 303 | 335 | 2380 |
| 1998 | 360 | 339 | 352 | 331 | 348 | 341 | 307 | 2378 |
| 1999 | 345 | 358 | 340 | 370 | 324 | 361 | 334 | 2432 |
| 2000 | 347 | 363 | 360 | 318 | 361 | 331 | 362 | 2442 |
| 2001 | 349 | 359 | 361 | 346 | 323 | 351 | 331 | 2420 |
| 2002 | 364 | 342 | 351 | 361 | 347 | 326 | 345 | 2436 |
| 2003 | 362 | 368 | 343 | 346 | 369 | 357 | 327 | 2472 |
| 2004 | 354 | 367 | 358 | 351 | 328 | 367 | 351 | 2476 |
| 2005 | 357 | 365 | 364 | 344 | 345 | 334 | 358 | 2467 |
| 2006 | 367 | 369 | 356 | 356 | 346 | 352 | 328 | 2474 |

Table 14.6: 2005 Mobility

| School | KS1 | KS2 | Total |
|--------------------------------|------------|------------|--------------|
| Bounds Green Infants | 13% | | 13% |
| Bounds Green Juniors | | 21% | 21% |
| Earlham | 20% | 55% | 43% |
| Lordship Lane | 12% | 35% | 27% |
| Nightingale | 10% | 40% | 30% |
| St Martin of Porres RC Primary | 4% | 13% | 10% |
| St Michael's CE Primary N22 | 6% | 28% | 20% |
| St Paul's RC Primary | 12% | 27% | 22% |
| Total | 12% | 35% | 27% |

Table 14.7: Summary of distances pupils live from their school

| School Name | % of pupils postcodes mapped | % of pupils living between 0-0.3 miles from the school | % of pupils living between 0-0.6 miles from the school | % of pupils living between 0-1 miles from the school | % of pupils living 1 miles or more from the school |
|------------------------------|------------------------------|--|--|--|--|
| Bounds Green Infants School | 92% | 34% | 72% | 79% | 21% |
| Bounds Green Junior School | 91% | 47% | 81% | 85% | 15% |
| Earlham Primary School | 94% | 49% | 82% | 92% | 8% |
| Lordship Lane Primary School | 96% | 53% | 81% | 91% | 9% |
| Nightingale Primary School | 91% | 42% | 73% | 85% | 15% |
| PA14 Total | 93% | 47% | 78% | 88% | 12% |

Completed building developments in PA 14

There have been 7 major housing developments completed since 1996.

| Site | Number of units | Child yield calculation |
|--|-----------------|-------------------------|
| 33 Commerce Road | 17 | 11 |
| Bounds Green Centre, Park Road | 54 | 19 |
| 68-76 Truro Road | 29 | 6 |
| R/O Bounds Green Br Depot, Imperial Road | 30 | 30 |
| 65 Trinity Road & 110-114 Nightingale Road | 17 | 6 |
| Adj. To Woodall House Lordship Lane | 114 | 38 |
| The Family Tree Public House & 472-480 Lordship Lane | 80 | 33 |
| Corner Of Nightingale Road, High Road | 23 | 3 |
| Former St. Gabriels Church, Bounds Green Road | 20 | 6 |
| Total | 384 | 152 |

Proposed housing developments in PA 14

There 4 major housing developments granted by the planners

| Site | Decision | Number of units | Child yield calculation |
|---|----------|-----------------|-------------------------|
| 133 Whittington Road N22 10 | Granted | 14 | 1 |
| 419 High Road N22 | Granted | 40 | 14 |
| Former Middlesex University Bounds Green Road | Granted | 260 | 88 |
| 98 White Hart Lane N22 | Granted | 27 | 6 |
| Total | | 341 | 109 |

Children's Centre development.

- 118 White Hart Lane Children's centre (will be in new building on site of WHL U5s from Sept 06). This is a phase one centre and offers the full range of services.
- 119 Bounds Green Infant / Junior schools will have a main children's centre to support the Bounds Green community. This will be in Phase 2.
- 120 Nightingale primary school will provide some children centre services and link into Bounds Green primary. This will be in Phase 2.
- 121 Lordship Lane primary school will provide some children centre services and link into Pembury Children centre. This will be in Phase 2.

Conclusion

- 122 The birth rate and reception class projections indicate an increase in demand, however in reality the number of reception pupils has remained relatively stable in the past 5 years. Reception applications have declined by 56 since 2005. This could be a result of co-ordinated admissions or a shift in location of temporary housing. This area has moderate mobility during key stage 1, but high mobility during key stage 2. The school population has remained fairly stable over the past 10 years.
- 123 Although there are a number of housing developments in this area, which could in future years place increased demand on the schools, there are currently a number of schools which currently have surplus capacity.
- 124 Bounds Green infant and junior schools have been operating as a 2½ fe for a number of years, therefore in agreement with the school we are formally reducing the PAN to 60. Bounds Green infant and junior schools have consulting and agreed on merging both schools together to form a hard federation, under one headteacher and one governing body.
- 125 The situation for school places will be kept under review in this area.

Appendix 3

School Organisational Plans in adjoining boroughs

Islington

- 126 There are plans to build 2 academies in Islington
- 127 St Mary Magdalene Academy is anticipated to be established from September 2007. This will be a new all-through school sponsored by the Church of England. It will provide education for children from age 5 to 16 and possibly beyond. The proposal is for St Mary Magdalene Primary School to close so that the all-through academy can be established.
- 128 It is proposed that the second academy in Islington should be established on the current site occupied by Islington Green Secondary School from September 2008. It will also provide accommodation for the secondary department of Richard Cloudesley Special School. The proposal is to establish a smaller 11 – 16 provision (four forms of entry) with post 16 provision for 200 students alongside the secondary department of Richard Cloudesley. New purpose built accommodation on the sites is proposed. Consultation on the academy and the closure of Islington Green School started in May 2006.

Camden

- 129 Primary school projections suggest a slight overall decrease in the short term, up to 2009, with a subsequent increase beyond this with figures exceeding current levels from 2010 (+260 to 270 on 2005 actual). There are more immediate pressures in some areas of the borough.
- 130 To alleviate this pressure two schools have been identified with potential for expansion. St. Mary's Kilburn CofE Primary, Quex Road NW6 has potential for expansion from 1fe to 2fe. The other one is an expansion from 1fe to 2fe at St. Alban's CofE Primary, Baldwin's Gardens, EC1.
- 131 Both these schools are some distance from Haringey and are unlikely to have an impact.
- 132 Secondary school projections indicate an increase with an estimated demand of around 500 – 670 additional 11-16 places by 2010. By 2015, the projections suggest there will be an estimated shortfall of around 400 places (i.e. between 2 and 3 forms of entry) across the 11-16 age range. However, this figure needs to be adjusted to take into account possible changes in patterns of cross border flows.
- 133 There is strong community and political pressures for new secondary schools in the North West and south of the borough. No sites of suitable size in either area are owned by the Council. The Building Schools for the Future (BSF) programme will provide funding to address pupil place needs but not site acquisition costs.

Hackney

- 134 There are plans to build a further 2 academies creating an additional 360 year 7 places by September 2007. Both sites are located in the centre of Hackney and are expected to be as popular as Mossbourne Academy. Due to their geographical location it is not expected that many Haringey pupils will not be drawn to them. Hackney predicts a net change of 50 Hackney pupils being drawn back to Hackney.
- 135 Both the Academies will open with as 6fe and are as follows:
- The Petchey Academy due to open in September 2006 (on the site of Kingsland school)
 - The Bridge Academy due to open in September 2007
- 136 Hackney has consulted on the future of Homerton College (an all boys school), with a view to closing the school as it is consistently under subscribed. Statutory notices have been published detailing a proposal to close Homerton College of Technology with effect from 31 August 2007 on the following model:
- Cease all admissions immediately closure is legally settled;
 - Close all year groups except year 11 on 31 August 2006;
 - Maintain the school as one year group only (year 11) for academic year 2006/07 then full closure on 31 August 2007.
- 137 A new mixed comprehensive would be consulted upon to with a view to open in 2008.
- 138 A planning application for 4000 units of affordable housing has been submitted to the Hackney planning office. The site is close to the Haringey / Hackney border. In response to this planning application Hackney are proposing the following changes:
- The expansion of Woodberry Down Primary School From 2 to 3 fe from 2009. The new school buildings will be on the site of the land currently occupied by Ombersley, Bewdley and Bowland Houses. (These blocks are due to be demolished in 2006).
 - The expansion of Sir Thomas Abney Primary School from 2 to 3 FE on its existing site towards the end of the regeneration programme (2015 / 2016)
 - A 6 FE mixed non-denominational secondary school on the site of Woodberry Down Primary School and the land currently occupied by Horston and Sherwood Houses. (The houses are due to be demolished in 2008.). This will be a new academy sponsored by the skinner trust. There are current proposals to close the Skinners' Company's School for Girls with effect from 31st August 2010, and open the new academy from 1st August 2010.

Waltham Forest

- 139 The Walthamstow Academy will replace McEntee school opening as a 6fe for September 2006. It is unlikely that there will be any impact upon Haringey.
- 140 There are also plans to federate Warwick Boys with Aveling Park reducing it to 900 places on a new site within a 2 mile radius. This means no statutory proposals need to be published. It is not expected to have a significant impact upon Haringey.
- 141 In the primary sector there is a planned amalgamation and a fresh start for a primary school that is in special measures.
- 142 There are no plans to change primary school capacity as indications show that Waltham Forest has slightly falling school rolls.

Enfield

- 143 Enfield borough has a number of organisational changes planned over the next few years. These are mostly in the secondary sector and will mean a total net gain of 3 forms of entry (90 places).
- 144 Salisbury School is a 9fe secondary located on split sites in Nightingale Road N9, which is in the south east of the borough. For the 2007 / 2008 school year there is a plan to consolidate the two sites on to a single site and reduce the admission number to create a 6fe school. As this school is a mile and half from the Haringey / Enfield border there could be an impact upon a small number of residents in the north east of Haringey.
- 145 Building work has started on the new 6fe Academy in the Northeast (Enfield Lock) of the borough opening for September 2007. The school is a ten minute walk from Enfield Lock station, so may attract some pupils who live by Tottenham Hale railway line.
- 146 There are no plans to change primary school capacity at this stage.

Barnet

- 147 The Cabinet of Barnet Council recently approved a £218 million Primary School Capital Investment programme (PSCIP). Essentially, the PSCIP is a programme of significant capital investment in Barnet's primary school infrastructure with Wave 1 consisting of the provision of twelve new build schools and two major refurbishments.
- 148 In phase one the developments that are likely to impact Haringey is the amalgamation of two 1fe schools, Coppetts Wood in Friern Barnet and Hollickwood in Muswell Hill, to provide a new 2fe school on the current Coppetts Wood site. The Hollickwood site would be sold for housing developments.
- 149 The expansion of Summerside school in Finchley from 1.5fe to 2fe.

This page is intentionally left blank

Agenda item:

School Organisation Committee
On 11 JULY 2006

 Report Title: **New School in Haringey Heartlands**

 Forward Plan reference number (if applicable): **N/A**

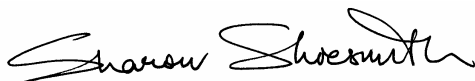
 Report of: **Sharon Shoesmith
Director
The Children's Service**

 Wards(s) affected: **All**
1. Purpose

- 1.1 To update SOC members on the new secondary school.
- 1.2 To provide an overview of the new 2006 regulations governing additional secondary school competitions

2. Recommendations

- 2.1 To review the information and respond to the current consultation.
- 2.2 To receive a further report in October setting out a Haringey Council proposal.

 Report Authorised by: **Sharon Shoesmith
Director
The Children's Service**


 Contact Officer: **Ian Bailey – Deputy Director, The Children's Service
Tel - 0208 489 2450**

3. Executive Summary

3.1 Rising numbers of pupils in the 11-16 phase require the Council to provide additional places by 2010. BSF provides the funding opportunity to achieve this goal. The introduction of new regulations require that the Council seeks interest from a range of potential education providers to establish a new school. The paper sets out a rationale to establish an inclusive community school. The timescales involved mean that if consultation begins in June, the competition will operate under the Education (New Secondary School Proposals) Regulations 2006 regulations.

4. Reasons for any change in policy or for new policy development (if applicable)

4.1 N/A

5. Local Government (Access to Information) Act 1985

5.1 The Education (New Secondary School Proposals) Regulations 2006

5.2 BSF Strategic Business Case

6 New Secondary School update.

- 6.1 On the 13th June, Executive agreed the competition for the new secondary school could begin. The consultation started on 26th June and will run for 6 six weeks finishing on 11th August. A public meeting is being held on 13th July to inform all interested parties of the consultation and proposed school. See Annex 1 for the new secondary school consultation document.
- 6.2 Detailed analysis of pupil numbers, presented in the BSF strategic business case, demonstrate that Haringey has an increasing number of pupils in primary schools and projections show that we will need to open a new school by 2010. Analysis of pupil distribution and of available sites for building lead us to the conclusion that the school needs to be in the centre of Haringey. Negotiations are now well advanced on the acquisition of a site in Wood Green ('Haringey Heartlands'). The selection of this site confers considerable regeneration benefits as set out in paragraph 8.
- 6.3 Current regulations governing the establishment of additional secondary schools require the Local Authority to engage in an open competition process. 'Bids' can be to establish any of the following types of schools:
- a) Community schools
 - b) Foundation schools
 - c) Voluntary controlled schools
 - d) Voluntary aided schools
 - e) Academies

- 6.4 Given the diverse nature of Haringey’s school population, we would want to propose that the new school should be a non-denominational, inclusive school, which suggests a community school.

7 The new 2006 regulations

- 7.1 Until September 2006 under Section 70 of the Education Act 2002, local authorities are required to invite proposals for a secondary school if the school will be an “additional” school (e.g. required to meet population growth) and the authority intends to establish a community school. A competition would be decided by the Secretary of State. (See Annex 2 for the process under the 2003 regulations)
- 7.2 However, from September 2006 the Education Act 2005 will come into force. Under Section 66 local authorities will be required to hold a competition whenever statutory proposals are required for a new secondary school, including proposals by promoters (unless, exceptionally, the Secretary of State agrees that a competition need not take place). Under the regulations, proposals will now be decided by the School Organisation Committee or, upon appeal, the Schools Adjudicator, not by the Secretary of State.
- 7.3 These regulations set a requirement to publish a preliminary notice inviting bids for the new school. The notice will invite bids from independent promoters within 4 months. The local authority must then publish details of all received bids, along with any local authority proposal. There will then be a six week representation period in which comments or objections can be made, before the bids are forwarded to the School Organisation Committee for a decision. (see Annex 3 for the process under the 2006 regulations)

8 Timetable

- 8.1 Section 66 of the Education Act 2005 is expected to come into force during September 2006. With this in mind the following timetable has been constructed to comply with the new regulations.

| | |
|---|--------------------------------|
| Start of consultation | 26 th June 2006 |
| Public meeting | 13 th July 2006 |
| End of consultation | 11 th August 2006 |
| Council to publish invitation to bid to promote the new secondary | 4 th September 2006 |
| Deadline for bids to be received by the council | 22 nd December 2006 |
| Publish Statutory notice detailing the received bids | 3 rd January 2007 |
| Public meeting discussing all bids | 16 th January 2007 |
| Statutory notice period ends | 13 th February 2007 |
| Deadline for decision by SOC | 24 th April 2007 |

- 8.2 This timetable is consistent with development of a school for September 2010 opening.
- 8.3 In line with the above timetable, a report will be submitted to SOC & the Council in October 2006 detailing Haringey's bid to establish a new community secondary school

9 Present Position

- 9.1 Secured BSF investment will provide the funding for the new school. The planned level of expenditure and accommodation schedule for the school are based on DfES BB98 and on the intended specialisms of the school in visual arts and media, and in provision for students with autism and asperger's syndrome

10 Evaluation of proposed site for the new school

- 10.1 Several sites were evaluated in a study to examine the best location for the new school. Patterns of pupil population were examined, which led the Authority to the conclusion that a new school in the centre of the Borough would be best placed to meet demand in the future.
- 10.2 The chosen site is in Wood Green, in the centre of the Borough, and is in a Regeneration area known as Haringey Heartlands which includes the 'cultural quarter'. Already there are creative industries established near the proposed site and within a short distance is Wood Green itself, where there are significant opportunities for educational links, with for example, Mountview Theatre Academy Also nearby is Alexandra Palace with its historic links to the media.
- 10.3 The site is 2.43 ha and is adjacent to Alexandra Park, which contains sport pitches; therefore the site is suitable for secondary school use. Access from the site to Alexandra Park is through a pedestrian tunnel under the adjacent railway, owned by Thames Water, with whom access will have to be negotiated.
- 10.4 The site is located within the Heartlands Regeneration Area, and is being promoted as high quality mixed-use urban quarter combining residential, employment ,leisure and new public realm which could benefit from a new secondary school providing extended and full service use and therefore the site scores highly in specialism and site suitability criteria.

11 Socio-Economic Impact

- 11.1 The land forms part of the Heartlands development, which is a significant regeneration scheme in the centre of the Borough. It is one of the largest development opportunities in North London and will contribute towards the regeneration of under used sites and attract major investment into the area. The Draft Haringey Heartlands Development Framework (2003) provides a broad policy and regeneration context for the area. One of the objectives for the Eastern Utility lands is 'improved community facilities, such as provisions for primary health care and improved school provision'. There is a range of development proposals

including the establishment of the Cultural Quarter, high quality employment units, new public open space and the creation of a mixed use urban quarter. Therefore a new school at this location could contribute towards the identified needs of this area and scores highly in this respect.

- 11.2 The site would also be in close proximity to a significant amount of residential development, increasing the need for new primary and secondary school places.

12 Deliverability

- 12.1 The site has several designations within the emerging Unitary Development Plan including the following:

- 'Area of Change' – Policy AC1 establishes the aim of comprehensive redevelopment of the Heartlands/Wood Green area and co-ordinated development which meets identified demands for enhanced and additional community facilities
- Defined Employment Area – Policy EMP1a applies to the site as part of a Regeneration Area, where comprehensive development for mixed use is encouraged in accordance with Policy AC1..
- Schedule 1: Site Specific Proposal 4 – comprehensive mixed use development to include employment, retail, housing, restaurant, healthcare and community facilities including education.

- 12.2 New Community Facilities – Policy CW1 supports proposals for new schools where they relate to adjoining and nearby development and meet a local need.

- 12.3 The principle of educational use on the site is therefore supported by the UDP policies .

13 The School's Vision and its design implications

- 13.1 Work has already started on an individual school vision (ISV), based on the vision developed in *Bright Futures*, the Council's vision and strategy for 11-19 year olds. The vision recognises the location of the school and the opportunities afforded by the resources within the local community and which points towards the learning environments required to deliver the vision. As part of the visioning process, the following points were identified as levers for transformational developments in learning and teaching: these are not in priority order but follow the structure of the ISV (a required art of the BSF Outline Business Case).

- Multi-functional classroom spaces suitable for a range of subjects, equipped to a high standard
- Faculty zones with spaces for display and for flexible teaching and learning
- Learning spaces able to accommodate a wider range of teaching group sizes
- Extensive visual arts and media production facilities

- ICT-rich Learning Resource Centre
- Larger, multi-purpose practical rooms to widen the range of vocational programmes
- Good sports facilities
- Large spaces for assemblies and public examinations
- Spaces for informal student interaction including common rooms
- Good access to all areas of the curriculum for people with disabilities and/or sensory impairments
- Good circulation, air quality and acoustics
- Better staff work spaces for preparation, meetings, and informal interaction
- Excellent ICT provision enabling ICT use across the curriculum through subject-specific applications; a centralised electronic learning resource centre; an intranet and extranet to enable remote working for students and staff and anytime, anywhere access to the information they need (both curricular and administrative).

14 Consultation and support

- 14.1 The school's vision is the outcome of a two year process in which regular reviews by the Local Authority of all schools, notably including the provision in Autumn 2003 of a review of options for school development and the development of *Bright Futures* the Haringey Strategy for 11-19 year olds in 2004/5. In the most recent phase of school visioning, Haringey Council commissioned education advisers from the PfS framework to support the Local Authority in working with all of its secondary and special schools through a three-stage process of defining the vision, conducting a vision translation workshops involving the headteacher, governors and senior staff, and an options appraisal workshop and an options appraisal workshop. This has provided a strong understanding of what we want to achieve as an educational community. It is this foundation that has led to the vision for the new school.

15 Consultation

- 15.1 All stakeholders as part of the consultation process for Bright Futures and Building Schools for the Future, including:
- All secondary and special schools
 - The College of North East London Borough of Haringey
 - The Learning and Skills Council
 - Partnerships for Schools and DfES
 - Children and Young People's Strategic Forum

16 Long Term Strategy

- 16.1 The proposal forms part of the Council's long term strategy to improve outcomes for young people defined in its strategy for 11-19 year olds, *Bright Futures*, one element of which is to renew the secondary estate. This is further detailed in the Strategic and Outline Business cases for Building Schools for the Future.

17 Summary and Conclusions

- 17.1 The new school will meet a need for places and contribute substantially to regeneration in the Haringey Heartlands.

18 Recommendations

- 18.1 To review the information and respond to the current consultation.
- 18.2 To receive a further report in October setting out a Haringey Council proposal.

19 Use of Appendices / Tables / Photographs

- 19.1 Appendix 1 – New secondary school consultation document
- 19.2 Appendix 2 – Additional secondary school competitions –process under the 2003 regulations
- 19.3 Appendix 3 – additional secondary school competition – process under the draft 2006 regulations

Appendix 2

Additional secondary school competitions –process under the 2003 regulations

Stage 1 Invitation to bid

The local authority publishes a notice inviting other interested parties to bring forward proposals for setting up a new secondary school. This must be published in at least one local newspaper and displayed in a prominent place in the area. It must also be sent to the local Church of England and Roman Catholic Dioceses, any other person or organisation that had previously expressed an interest or any other organisation which is likely to have an interest in setting up a new secondary school

Stage 2 – Writing and submission of proposals

Promoters must respond by sending their proposals to the local authority within the period specified by the authority in the notice. This has to be at least two months from the date of the publication of the first notice. But if local planning permits it, we would encourage authorities to lengthen this period in order to give potential promoters more time to prepare to submit bids.

Stage 3 – Local authority then publishes a secondary notice summarising the proposals

Received and any it wishes to make itself and asks for comments. This second notice must be published in a local newspaper and full copies of all proposals must also be made available at the authority's office.

Stage 4 – Representation period

Comments on the proposals must be sent to the authority within six weeks of the publication of the second notice. Any person can send comments, which can be objections as well as expressions of support for specific proposals or elements of proposals.

Stage 5 – Submitting to the School Organisation Committee (SOC)

The authority has a further week to submit all proposals and comments, including their own, to the SOC. Within six weeks the SOC must consider the proposals and send all proposals and the SOC's views to the Secretary of State. The SOC can consult further during this period if it wishes

Stage 6 – Secretary of State makes a decision

Appendix 3

Additional secondary school competitions –process under the 2003 regulations

Stage 1 – Consultation

Before publishing the notice inviting proposals the competition an authority has to consult a range of local stakeholders including:

- The governing bodies of any schools which are proposed to be discontinued and whose pupils may be expected to transfer to the new school
- The governing bodies of any primary schools whose pupils might be expected to attend the new school
- The governing bodies of other maintained schools in the area, including schools in an adjoining authority that may be affected by the proposals
- Any other local authority which might be affect by the establishment of the new school
- Parents and teachers in the area who may be affected by the proposals, including parents at feeder primary schools and those living in, or may have children attending a school in the area of , an adjoining authority
- The Church of England, the Roman Catholic Church and any other person or organisation that has expressed an interest in writing to the authority in establishing and additional secondary school
- The Learning Skills Council
- Any MP whose constituency includes the site of the proposed school or whose constituents are likely to be affected by the proposals

The local authority must arrange for at least one public meeting to be held to inform the public of the consultation and proposed school.

Once the consultation has started the authority must inform the Secretary of State in writing, confirming the consultation's duration.

Stage 2 – Invitation to bid

The authority publishes a notice inviting other interested parties to bring forward proposals for setting up a new secondary school. This must be published in at least one local newspaper and displayed in a prominent place in the area it must be sent to:

- Any local authority affected by the proposal

- The local Church of England and Roman Catholic dioceses, and any other person or organisation that has previously expressed an interest or any other organisation which is likely to have an interest in setting up a new secondary school
- Secretary of State and the adjudicator
- The Learning Skills Council
- Any person or Organisation who the authority thinks will be interested

Stage 3 – writing and submission of proposals

Promoters must respond by sending their proposals to the authority within the period specified in the notice. This has to be at least four months from the date of the publication of the first notice.

Stage 4 – Local authority publishes a second notice

A notice summarising the proposals received and any it wishes to make itself and asks for comments. This second notice must be published within three of the submission date for proposals .

The second notice must be published in a local newspaper and full copies of all the proposals must be made available at the authority's offices. Copies of all proposals must be sent to the Church of England and Roman Catholic dioceses, the learning skills council, anyone who had expressed an interest in establishing a new secondary school in the area, the Secretary of state and anyone who requests a copy.

The authority also has to arrange at least one public meeting within two weeks of publishing the proposals.

Stage 5 – representation period

Comments on the proposal must be sent to the authority within six weeks of the publication of the second notice. Any person can send comments, which can be objections as well as expressions of support for specific proposals or elements of proposals.

Stage 6 – Submission to the School Organisation Committee (SOC)

The authority has to submit all proposals and comments made during the representation period to the SOC within two weeks of the end of the representation period.

Stage 7 – Decision by the School Organisation Committee (SOC) or adjudicator

The committee has two months in which to decide the competition.

If one of the proposals is for an academy, the SOC must consult the SOS within two weeks of receiving the proposals

Decision by the Schools Adjudicator – the proposals are forwarded to the adjudicator for a decision if :

- The SOC fails to decide on proposals
- The SOC fails to reach a decision within two months of receiving the proposals from the authority.

This page is intentionally left blank